

Реле силовое JQX-60F, Минск т.80447584780

www.fotorele.net www.tiristor.by радиодетали, электронные компоненты

email minsk17@tut.by tel.+375 29 758 47 80 мтс

**Реле, силовое, JQX-60F, 60А, 12в, 24в, 220в, 240в, 12v, 24v, 220v, 240v, vdc, vac, 250vac,
ампер,
каталог, описание, технические, характеристики, datasheet, параметры,
маркировка, габариты, фото, даташит,**



Реле силовое JQX-60F

Реле силовое / промежуточное для ремонта электро оборудования:

Asiaon JQX-60F-1Z 60A (Аналоги, замена, JQX-58F, JQX-63F, LJQX-60F/1Z, ZQ 60, Q60F-1Z, JQC-60F, ННС71G, WJ178, LJQX-68F/1Z).

Управление 12 вольт или 24 вольта или 240 вольт

- 1) JQX-60F-1Z 12v DC 60A - 450р.
- 2) JQX-60F-1Z 24v DC 60A - 450р.
- 3) JQX-60F-1Z 240v AC 60A - 550р.

Нагрузка

до 60А 250vAC или
до 60А 30vDC

Схема

1 группа на переключение

Jqx-60f-1z 12 В DC катушка Контактное реле

DC12V

Тип: jqx-60f

Контакты: 1Z

Свяжитесь с Ёмкость: 60А 250vac/60а 24 В

Номинальная катушки Мощность: Dc 2 Вт/AC 2.5ва

Контактное сопротивление: ≤ 50 мОм

Сопротивление изоляции: ≥ 1000 мΩ

Рабочая Температура: -40С ~ + 60С

Размеры: 45.8 x 45 x 64 мм

jqx-60f купить

jqx-60f 12vdc

jqx-60f 28 vdc

jqx-60f 1z 60a dc 12 в катушка реле

jqx-60f 1z 60a

jqx-60f/1z

jqx-60f-a

jqx-60f 220в

jqx-60f купить в Минске

г. Минск www.fotorele.net www.tiristor.by email minsk17@tut.by тел. +375447584780

JQX-60F

Features

- 60A Contact Change-over Capacity
- Swift Connection
- With Opening and dust-proof Type



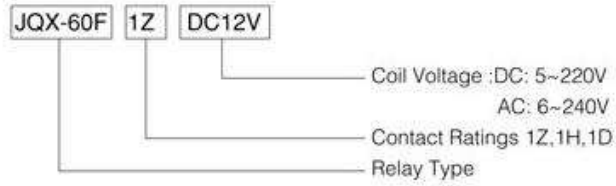
JQX-60F



JQX-60F



Power Relay



Coil Voltage :DC: 5~220V
AC: 6~240V
Contact Ratings 1Z,1H,1D
Relay Type

Contact Ratings

Contact Ratings	1Z,1H,1D
Contact Resistance	100mΩ(1A 6VDC)
Contact Material	AgCdO
Contact capacity	60A,70A,80A 250VAC/30VDC

Specification

Insulation Resistance	1000MΩ.500VDC
Dielectric Strength	BCC 2500V 1 min
	BOC 1200V 1 min
Operate Time	25ms/25ms
Terminal Type	Screw

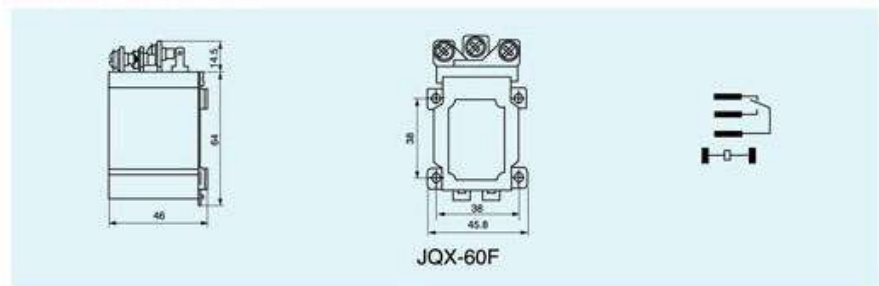
Coil Ratings

Nominal Coil Power	DC:2.0W AC:2.5VA
--------------------	------------------

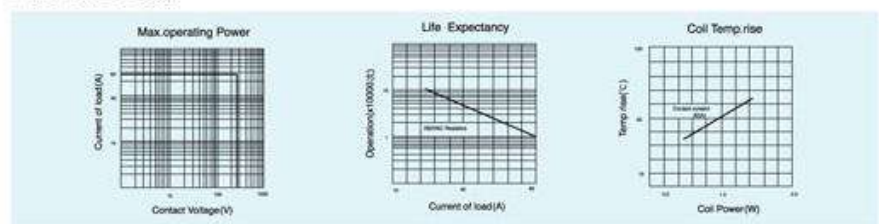
Coil Versions

Nominal Voltage VDC	Pull-in Voltage VDC	Release Voltage VDC	Coil Resistance Ω: ±10%	Nominal Voltage VAC	Pull-in Voltage VAC	Release Voltage VAC	Coil Resistance Ω: ±10%
6	4.80	0.60	20	6	4.80	1.80	14.4
12	9.60	1.20	45	12	9.60	3.60	57
24	19.2	2.40	320	24	19.20	7.20	250
48	38.4	4.80	1280	48	38.40	14.4	921
60	48.0	6.00	2800	110	88.00	36.0	5000
110	88.0	11.0	9650	220/240	176.00	72.0	19600/25040

Dimension.Bottom View



Reference Data



POWER RELAY



Model		JQX-60F		
Outline dimension(mm)		80 × 47 × 48		
Contact data	Contact arrangement	1Z(1C 1H) 2Z(2C 2H)		
	Contact materials	Silver alloy		
Max switching current	20		50A	
	15		60A	
	10			
	7			
	5			
	2			
Max switching voltage VDC/VAC		28VDC/250VAC		
Max switching power W/WA		1.4KW/12.5KVA		
Rated load (Resistive)		1Z:28VDC/63A 250VAC/63A 2Z:28VDC/60A 250VAC/60A		
Coil data	Rated voltage DC/AC		6~220VDC/6~380VAC	
	Pick-up voltage		AC ≤ 75%、DC ≤ 90%	
	Drop-out voltage		AC ≤ 30%、DC ≤ 30%	
	Coil power W/WA		3.5W/5.5VA	
Specifications data	Contact resistance (mΩ)		≤ 50	
	Insulation resistance (mΩ)		≥ 500	
	Dielectric strength Vr.m.s	Between open contacts		≥ 1500V
		Between coil & contacts		≥ 2000V
		Between contacts form		≥ 2000VAC
	Ambient temp (°C)		-45°C~+55°C	
	Operation/release time (ms)		≤ 20/20ms	
Service life	Electrical(operation)		10 ⁵	
	Mechanical(operation)		10 ⁷	
Mounting holes(mm)				
Mounting method		Install welding method		



中国·人民电器集团
PEOPLE ELE. APPLIANCE GROUP CHINA

POWER RELAY

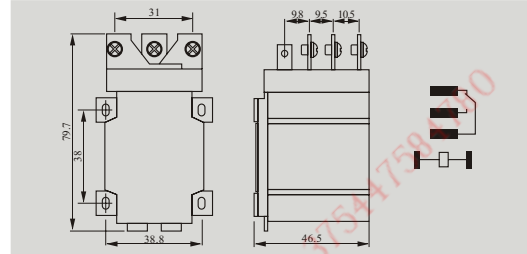
POWER RELAY



JQX-60F-1Z

JQX-60F-1Z

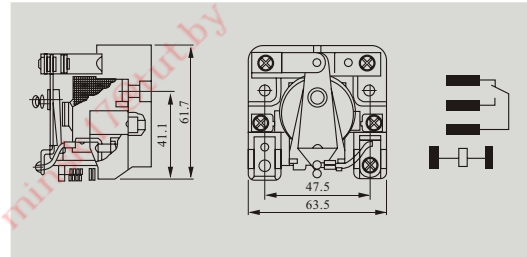
Size(mm): 65×38.5×46
Terminal layout: 1Z、1H、1D
Contact capacity: 60A 250VAC
Contact resistance: ≤50mΩ
Insulation resistance: ≥1000MΩ
Dielectric strength: BOC 1500VAC
BCC 2500VAC



JQX-62F-1Z

JQX-62F-1Z

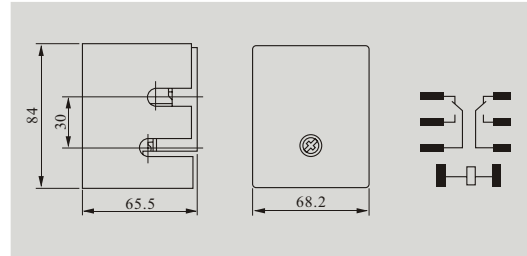
Size(mm): 61.7×63.5×56.5
Terminal layout: 1Z
Contact capacity: 80A 250VAC
80A 30VDC
Contact resistance: ≤50mΩ
Insulation resistance: ≥1000MΩ
Dielectric strength: BOC 1500VAC
BCC 2500VAC



JQX-62F-2Z

JQX-62F-2Z

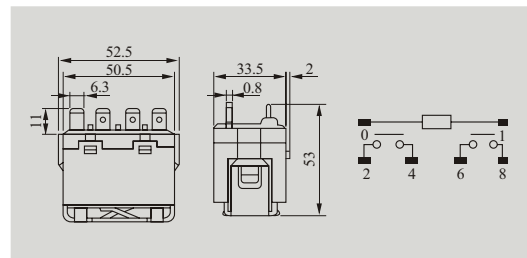
Size(mm): 84×68.2×65.5
Terminal layout: 2Z
Contact capacity: 60A 250VAC
60A 30VDC
Contact resistance: ≤50mΩ
Insulation resistance: ≥1000MΩ
Dielectric strength: BOC 2200VAC
BCC 2200VAC



G7L-2P-TUBJ

G7L-2P-TUBJ

Size(mm): 68.5×33.5×47
Terminal layout: 1H、2H
Contact capacity: 20A 220VAC
Contact resistance: ≤50mΩ
Insulation resistance: ≥1000MΩ
Dielectric strength: BOC 1500VAC
BCC 2500VAC



Model	Coil nominal voltage	Coil nominal power	Electrical life	Mechanical life	Operating temperature	Weight	Mounting methods
JQX-60F-1Z	DC 6 to 220V AC 6 to 380V	DC ≤ 3W AC ≤ 4.5VA	10 ⁵ OPS	10 ⁶ OPS	-40℃~55℃	≤187g	Screw Mounting
JQX-62F-1Z	DC 6 to 220V AC 6 to 380V	DC ≤ 3.3W AC ≤ 5VA	10 ⁵ OPS	10 ⁶ OPS	-45℃~40℃	≤210g	Screw Mounting
JQX-62F-2Z	DC 6 to 220V AC 6 to 380V	DC ≤ 4W AC ≤ 6VA	10 ⁵ OPS	10 ⁶ OPS	-40℃~40℃	≤340g	Screw Mounting
G7L-2P-TUBJ	DC 6 to 240V AC 6 to 220V	DC ≤ 2W	10 ⁵ OPS	10 ⁶ OPS	-40℃~70℃	≤100g	Outlet



ARTICLE CODE

S28 2C DC12V

S28(JQX-60F) Series



Coil voltage
6~110VDC
6~220VAC

Contact Ratings
1C,1A,1B

Model Name:S28

Main Features:

- With screw terminal fixed mounting.
- With open type, dust proof cover type.

PERFORMANCE(at initial value)

Item	Type	1C,1A,1B
Contact Resistance		100mΩ Max.(Initial Value)
Operate Time		25msec Max.
Release Time		25msec Max.
Pull In Voltage(VDC)		DC:75%Max,AC:80%Max
Drop Out Voltage(VDC)		DC:10%Max,AC:30%Max
Max. Allowable Voltage(VDC)		110%Max
Coil Nominal Voltage		DC:6V,9V,12V,24V,36V,48V,110V,220V AC:6V,9V,12V,24V,36V,48V,110V,220V,240V
Power Consumption(W)		DC:2.0W AC:2.5VA
Dielectric Strength between Coil & Contact between Contact between Contact		2500VAC (1min) 1500VAC (1min) 1500VAC (1min)
Insulation Resistance		1000MΩ Min.(DC500V)
Operating Ambient Temperature		-40℃ ~+70℃
Humidity		35 to 80% RH
Rated Carrying Current		60A/250VAC 60A/30VDC
Vibration Resistance		10G(10~55Hz) (Dual Amplitude:1.0mm)
Shock Resistance		10G
Life Expectancy Mechanically Electrically		10,000,000 ops.Min.(18000 ops./h) 100,000 ops.Min.(1800 ops./h)
Weight		160g(approx.)



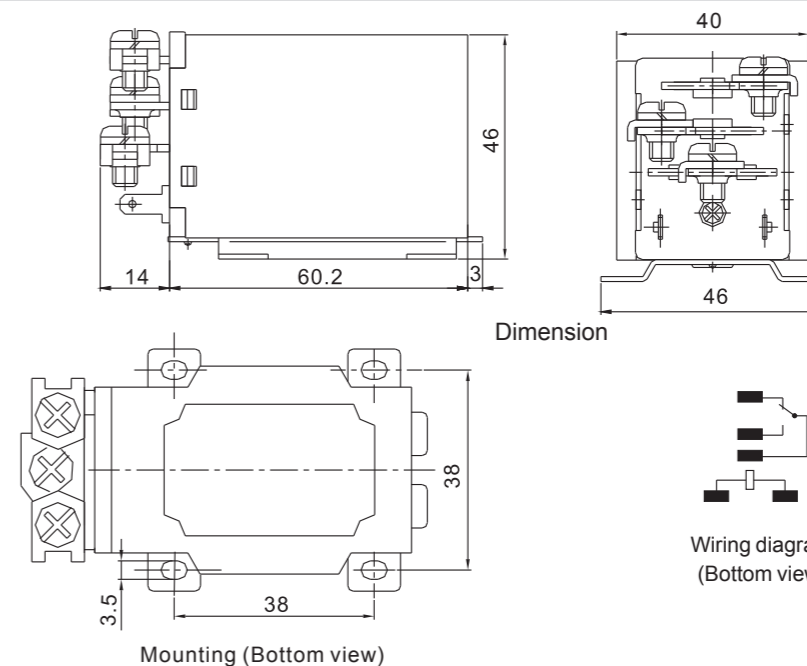
COIL RATING(at 20℃)

	Nominal Voltage (VDC)	Coil Resistance (Ω)(±10%)	Power Consumption(W)	Nominal Current (mA)(±10%)	Pull In Voltage (VDC)	Drop Out Voltage (VDC)	Max. Allowable Voltage (VDC)
DC	6V	20Ω	2.0W	300.0mA	75% MAX	10% MIX	110%
	12V	45Ω		266.7mA			
	24V	320Ω		75.0mA			
	48V	1280Ω		37.5mA			
	60V	2800Ω		21.4mA			
	110V	9650Ω		11.4mA			

	Nominal Voltage (VAC)	Coil Resistance (Ω)(±10%)	Power Consumption(VA)	Pull In Voltage (VAC)	Drop Out Voltage (VAC)	Max. Allowable Voltage (VAC)
AC	6V	14.4Ω	2.5VA	80% MAX	30% MIX	110%
	12V	57Ω				
	24V	250Ω				
	48V	921Ω				
	110V	5000Ω				
	220V	19600Ω				
240V	25040Ω					

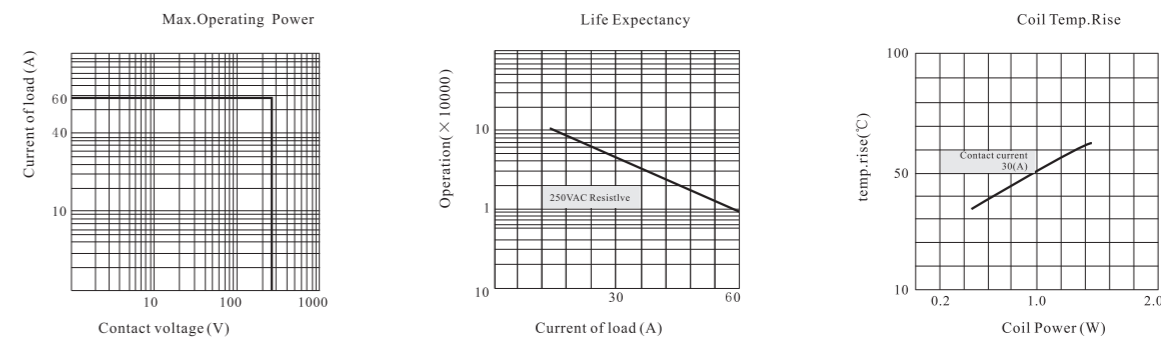
OUTLINE DIMENSION,WIRING DIAGRAM & PC BOARD LAYOUT

Unit: mm



Remark: 1) In case of no tolerance shown in outline dimension: outline dimension ≤1mm, tolerance should be ±0.2mm; outline dimension >1mm and ≤5mm, tolerance should be ±0.3mm; outline dimension >5mm, tolerance should be ±0.4mm.
2) The tolerance without indicating for PCB layout is always ±0.1mm.

WIRING DIAGRAMS(Bottom View)



Реле силовое JQX-60F, Минск т.80447584780

www.fotorele.net www.tiristor.by радиодетали, электронные компоненты

email minsk17@tut.by tel.+375 29 758 47 80 мтс

Реле, силовое, JQX-60F, 60А, 12в, 24в, 220в, 240в, 12v, 24v, 220v, 240v, vdc, vac, 250vac, ампер, каталог, описание, технические, характеристики, datasheet, параметры, маркировка, габариты, фото, даташит,



Реле силовое JQX-60F