

# Реле Omron 61f, Минск Т.80447584780

[www.fotorele.net](http://www.fotorele.net) [www.tiristor.by](http://www.tiristor.by) радиодетали, электронные компоненты

email [minsk17@tut.by](mailto:minsk17@tut.by) tel.+375 29 758 47 80 МТС

омрон, Omron, каталог, описание, технические, характеристики, datasheet, параметры, маркировка, габариты, фото, даташит, спецификация, сайт, Беларусь, Минск, продажа, купить, аналог, замена, 61f



61f-gp-n8 230ac  
61f-gp-n2-ac120  
61fgpnac120  
61f-g1ac120/240  
61f-g1hac110/220  
61f-g1hac120/240v  
61f-g1hnac110/220  
61f-g1n-ac120/240  
61f-g1ndac110/120  
61f-g1ndac120/240  
61f-g1nhac120/240  
61f-g1nlac110/2202km  
61f-g1nlac120/2402km  
61f-g1nlac120/2404km  
61f-g1nrac110/220  
61f-g1nrac120/240  
61f-g1p-ac120  
61f-g1p/ac100  
61f-g1p220ac  
61f-g1pac110  
61f-g2-ac100/200  
61f-g2ac120/240  
61f-g2hac120/240  
61f-g2nac100/200  
61f-g2nac110/220  
61f-g2nac120/240  
61f-g2ndac110/220  
61f-g2ndac120/240  
61f-g2nhac110/220  
61f-g2nhac120/240

61f-g2nlac110/2202km  
61f-g2nlac110/2204km  
61f-g2nlac120/2402km  
61f-g2nlac120/2404km  
61f-g2nrac110/220  
61f-g2p-ac200  
61f-g2pac100  
61f-g2pac120  
61f-g2phac100  
61f-g3-ac110/220  
61f-g3-ac120/240  
61f-g3hac100/200  
61f-g3hac110/220  
61f-g3hac120/240v  
61f-g3nac100/200  
61f-g3nac110/220  
61f-g3nac120/240  
61f-g3ndac110/220  
61f-g3ndac120/240  
61f-g3nhac110/220  
61f-g3nhac120/240  
61f-g3nlac110/2202km  
61f-g3nlac110/2204km  
61f-g3nlac120/2402km  
61f-g3nlac120/2404km  
61f-g3nrac110/220  
61f-g3nrac120/240  
61f-g3tac110/220  
61f-g4ac120/240  
61f-g4h-ac120/240  
61f-g4hac110/120  
61f-g4nac110/220  
61f-g4nac120/240  
61f-g4ndac110/220  
61f-g4ndac120/240  
61f-g4nhac110/220  
61f-g4nhac120/240  
61f-g4nlac110/2202km  
61f-g4nlac110/2204km  
61f-g4nlac120/2402km  
61f-g4nlac120/2404km  
61f-g4nrac110/220  
61f-g4nrac120/240  
61f-gac100/200  
61f-gac110/220  
61f-gac120/240  
61f-gdac110/220  
61f-glac100/2002km  
61f-glac100/2004km  
61f-gnac110/220

61f-gnac120/240  
61f-gndac110/220  
61f-gndac120/240  
61f-gnhac120/240  
61f-gnlac110/2202km  
61f-gnlac110/2204km  
61f-gnlac120/2402km  
61f-gnlac120/2404km  
61f-gnrac120/240  
61f-gp-n-ac120  
61f-gp-n-ac200  
61f-gp-n2110vac  
61f-gp-n2220vac  
61f-gp-n2240  
61f-gp-n224vac  
61f-gp-n8-v50ac110  
61f-gp-n8220vac  
61f-gp-n8230vac  
61f-gp-n8ac100  
61f-gp-n8ac110  
61f-gp-n8ac120  
61f-gp-n8ac200  
61f-gp-n8ac24  
61f-gp-n8ac240  
61f-gp-n8dac120  
61f-gp-n8dac240  
61f-gp-n8hac120  
61f-gp-n8hac24  
61f-gp-n8hac240  
61f-gp-n8hy110vac  
61f-gp-n8l-2kmac120  
61f-gp-n8l-2kmac240  
61f-gp-n8l-4kmac120  
61f-gp-n8l-4kmac240  
61f-gp-n8y110vac  
61f-gp-nac100  
61f-gp-nac110  
61f-gp-nac220  
61f-gp-nd-ac100  
61f-gp-ndac120  
61f-gp-ndac200  
61f-gp-nh3ac100  
61f-gp-nh3ac200  
61f-gp-nhac100  
61f-gp-nhac110  
61f-gp-nhac120  
61f-gp-nhac200  
61f-gp-nhac24  
61f-gp-nl2kmac120  
61f-gp-nl4kmac120

61f-gp-nlac244km  
61f-gp-nr-ac100  
61f-gp-ntac110  
61f-gp-ntac120  
61f-gp-ntac240.  
61f-gpn-bc24vdc  
61f-gpn-bt24vdc  
61f-gpn-v50-ac110  
61f-gpn-v50-ac120  
61f-gpn-v50-ac220  
61f-gpn-v50ac100  
61f-gpn-v50ac200  
61f-gpn-v50ac240  
ap7361-fge-7  
bd6961f-ge2  
cf361fgk  
cf361fgkw  
hv2661fg-g  
hv2661fg-gm931  
hv2761fg-g  
hv2761fg-gm931  
hv461fg-gm931  
tb6561fg(o,el)  
tb6561fg,8,el  
61f-gp-n ac100  
61f-gp-n ac110  
61f-gp-n-ac120  
61f-gp-n-ac120  
61f-gp-n-ac200  
61f-gp-n2-ac120  
61f-gp-n2-ac120  
61f-gp-n8 230ac  
61f-gp-n8 ac110  
61f-gp-n8 ac120  
61f-gp-n8 ac120  
61f-gp-n8 ac240  
61f-gp-n8-v50 ac110  
61f-gp-nd-ac100  
61f-gp-nh ac24  
61f-gpn-bc 24vdc  
61f-gpn-bt 24vdc  
61f-gpn-v50 ac100  
61f-gpn-v50-ac110  
61f-gpn-v50-ac120  
61f-gpn-v50-ac220  
ap7361-fge-7  
ap7361-fge-7  
ap7361-fge-7  
chpht0805k3161fgta  
chpht0805k3161fgta

hv2761fg-g

nppn061fggn-rc

tb6561fg,8,el

tb6561fg,8,el

61f-gp-n8 230ac

61f-gp-n8 230ac, omron: промышленная автоматика 61fgpn8

61f-gp-n8 230ac

11pfa (11pfa) цоколь для 61f-g..11 контакт.

14pfa (14pfa) цоколь для 61f-g..14 контакт.

61f-gp-n8 230ac 61fgpn8

61fg110220ac (61f-g 110/220ac) устройство контроля уровня токопроводящих веществ серии 61f, напряжение питания 110 v ac

61fg1110220ac (61f-g1 110/220ac) устройство контроля уровня токопроводящих веществ серии 61f, напряжение питания 110 v ac

61fg1120240ac (61f-g1 120/240ac) устройство контроля уровня токопроводящих веществ серии 61f, напряжение питания 120/240240 v ac

61fg120240ac (61f-g 120/240ac) устройство контроля уровня токопроводящих веществ серии 61f, напряжение питания 120/240240 v ac

61fg1h110220ac (61f-g1h 110/220ac) устройство контроля уровня токопроводящих веществ серии 61f, напряжение питания 110220 v ac

61fg1n120240ac (61f-g1n 120/240ac) устройство контроля уровня токопроводящих веществ серии 61f, напряжение питания 120/240240 v ac

61fg1nl110220ac2km (61f-g1nl 110/220ac 2km) устройство контроля уровня токопроводящих веществ серии 61f, напряжение питания 110220 v ac

61fg1nl110220ac4km (61f-g1nl 110/220ac 4km) устройство контроля уровня токопроводящих веществ серии 61f, напряжение питания 110220 v ac

61fg1p220ac (61f-g1p 220ac) устройство контроля уровня токопроводящих веществ серии 61f, напряжение питания 220 v ac

61fg1pac120 (61f-g1p ac120) устройство контроля уровня токопроводящих веществ серии 61f, напряжение питания 120 v ac

61fg1pac200 (61f-g1p ac200) устройство контроля уровня токопроводящих веществ серии 61f, напряжение питания 200 v ac

61fg1phas100 (61f-g1ph ac100) устройство контроля уровня токопроводящих веществ серии 61f, напряжение питания 100 v ac

61fg1t110220ac (61f-g1t 110/220ac) устройство контроля уровня токопроводящих веществ серии 61f, напряжение питания 110220 v ac

61fg2110220ac (61f-g2 110/220ac) устройство контроля уровня токопроводящих веществ серии 61f, напряжение питания 110 v ac

61fg2120240ac (61f-g2 120/240ac) устройство контроля уровня токопроводящих веществ серии 61f, напряжение питания 120/240240 v ac

61fg2h110220ac (61f-g2h 110/220ac) устройство контроля уровня токопроводящих веществ серии 61f, напряжение питания 110220 v ac

61fg2n120240ac (61f-g2n 120/240ac) устройство контроля уровня токопроводящих веществ серии 61f, напряжение питания 120/240240 v ac

61fg2nhac110220 (61f-g2nh ac110/220) устройство контроля уровня токопроводящих веществ серии 61f, напряжение питания 110220 v ac

61fg2nhac120240 (61f-g2nh ac120/240) устройство контроля уровня токопроводящих веществ серии 61f, напряжение питания 120/240240 v ac

61fg2p110ac (61f-g2p 110ac) устройство контроля уровня токопроводящих веществ серии 61f, напряжение питания 110 v ac

61fg2p220ac (61f-g2p 220ac) устройство контроля уровня токопроводящих веществ серии 61f, напряжение питания 220 v ac

61fg2tdl110220 (61f-g2-tdl 110/220) устройство контроля уровня токопроводящих веществ серии 61f, напряжение питания 110220 v dc

61fg3110220ac (61f-g3 110/220ac) устройство контроля уровня токопроводящих веществ серии 61f, напряжение питания 110 v ac

61fg3120240ac (61f-g3 120/240ac) устройство контроля уровня токопроводящих веществ серии 61f, напряжение питания 120/240240 v ac

61fg3d110220ac (61f-g3d 110/220ac) устройство контроля уровня токопроводящих веществ серии 61f, напряжение питания 110220 v ac











61fgpndac100 (61f-gp-nd ac100) устройство контроля уровня токопроводящих веществ серии 61f, монтаж вставной, напряжение питания 100 v ac  
61fgpne1 (61f-gp-ne1) устройство контроля уровня токопроводящих веществ серии 61f, монтаж вставной, напряжение питания dc  
61fgpne2 (61f-gp-ne2) устройство контроля уровня токопроводящих веществ серии 61f, монтаж вставной, напряжение питания dc  
61fgpnh100ac (61f-gp-nh 100ac) устройство контроля уровня токопроводящих веществ серии 61f, монтаж вставной, напряжение питания 100 v ac  
61fgpnr100ac (61f-gp-nr 100ac) устройство контроля уровня токопроводящих веществ серии 61f, монтаж вставной, напряжение питания 100 v ac  
61fgpnt100ac (61f-gp-nt 100ac) устройство контроля уровня токопроводящих веществ серии 61f, монтаж вставной, напряжение питания 100 v ac  
61fgpnt200ac (61f-gp-nt 200ac) устройство контроля уровня токопроводящих веществ серии 61f, монтаж вставной, напряжение питания 200 v ac  
61fgpntdlac110v (61f-gp-n-tdl ac110v) устройство контроля уровня токопроводящих веществ серии 61f, монтаж вставной, напряжение питания 110 v ac  
61fgpnv50110ac (61f-gpn-v50 110ac) устройство контроля уровня токопроводящих веществ серии 61f, монтаж вставной, напряжение питания 110 v ac  
61fgpnv50120ac (61f-gpn-v50 120ac) устройство контроля уровня токопроводящих веществ серии 61f, монтаж вставной, напряжение питания 120 v ac  
61fgpnv50220ac (61f-gpn-v50 220ac) устройство контроля уровня токопроводящих веществ серии 61f, монтаж вставной, напряжение питания 220 v ac  
61fgpnv50240ac (61f-gpn-v50 240ac) устройство контроля уровня токопроводящих веществ серии 61f, монтаж вставной, напряжение питания 240 v ac  
61fgr100200ac (61f-gr 100/200ac) устройство контроля уровня токопроводящих веществ серии 61f, напряжение питания 100/200200 v ac  
61f-gp-n-ac120  
61f-gp-n2-ac120  
61f-gp-n8 230ac  
61f-gp-n8 ac120  
61f-gp-n8-v50 ac110  
61f-gp-nd-ac100  
61f-gpn-bc 24vdc  
61f-gpn-v50 ac100  
61f-gpn-v50-ac110  
61f-gpn-v50-ac220  
hv2761fg-g  
nppn061fggn-rc  
61f-gp-n8 230ac /omron/ moq>3  
61f-gp-n8 230ac /omron/ moq>4  
61f-gp-n8 24ac /omron industrial automation/ moq> 1  
61f-gpn2 240ac /omron industrial automation/ moq> 5  
61fgpn824ac /omron industrial automation/ moq> 1  
chpht0805k3161fgt /vishay/ moq>10000  
mr04x8661fgl /walsin/ moq>10000  
pht0805e8061fgt /vishay/ moq>10000  
tb6561fg(o,8,el) /toshiba/ moq>10000  
61f-gp-n8 230ac  
m37761fgagp mqfp160  
tb1261fg qfp  
tb6561fg(el) sop30  
61f-gp-n8 230ac  
61f-g2 110/220ac

61f-g2nh ac110/220  
61f-g3d 110/220ac  
61f-g3n ac110/220  
61f-gp-n 230vac ce  
61f-gp-n 240ac ce  
61f-gp-n ac100  
61f-gp-n-tdl ac110v  
61f-gp-n2 110ac ce  
61f-gp-n2 120ac ce  
61f-gp-n2 220ac  
61f-gp-n2 230ac  
61f-gp-n2 24ac ce  
61f-gp-n8 100ac+  
61f-gp-n8 110ac  
61f-gp-n8 120ac  
61f-gp-n8 200ac  
61f-gp-n8 230ac  
61f-gp-n8 24ac  
61f-gp-n8-v50 110vac  
61f-gp-n8-v50 230ac  
61f-gp-n8-v50 24vac  
61f-gp-n8d 100ac+  
61f-gp-n8d 110ac+  
61f-gp-n8d 120ac+  
61f-gp-n8d 200ac+  
61f-gp-n8d 220ac+  
61f-gp-n8d 230ac  
61f-gp-n8d 240ac+  
61f-gp-n8d 24ac+  
  
61f-gp-n8h 100ac+  
  
61f-gp-n8h 110ac  
  
61f-gp-n8h 120ac+  
  
61f-gp-n8h 200ac+  
  
61f-gp-n8h 220ac  
  
61f-gp-n8h 230ac  
  
61f-gp-n8h 24ac  
  
61f-gp-n8hy 100ac+  
  
61f-gp-n8hy 110ac+  
  
61f-gp-n8hy 200ac+  
  
61f-gp-n8hy 220ac  
61f-gp-n8l 100ac 2km+  
61f-gp-n8l 100ac 4km+

61f-gp-n8l 110ac 2km  
61f-gp-n8l 110ac 4km  
61f-gp-n8l 120ac 2km+  
61f-gp-n8l 120ac 4km+  
61f-gp-n8l 200ac 2km+  
61f-gp-n8l 200ac 4km+  
61f-gp-n8l 220ac 2km  
61f-gp-n8l 220ac 4km+  
61f-gp-n8l 230ac 2km+  
61f-gp-n8l 230ac 4km+  
61f-gp-n8l 240ac 2km  
61f-gp-n8l 240ac 4km  
61f-gp-n8l 24ac 2km  
61f-gp-n8l 24ac 4km  
61f-gp-n8r 100ac+  
61f-gp-n8r 110ac+  
61f-gp-n8r 120ac+  
61f-gp-n8r 200ac+  
61f-gp-n8r 220ac+  
61f-gp-n8r 230ac+  
61f-gp-n8r 240ac+  
61f-gp-n8r 24ac+  
61f-gp-n8y 110ac  
61f-gp-n8y 240ac  
61f-gp-n8y 24ac  
61f-gp-nd ac100  
61f-gp-ne1  
61f-gp-ne2  
61f-gp-nh 100ac  
61f-gp-nr 100ac  
61f-gp-nt 200ac  
61f-gpn 110ac  
61f-gpn 200ac  
61f-gpn-bc 24vdc  
61f-gpn-bt 24vdc  
61f-gpn-v50 110ac  
61f-gpn-v50 120ac  
61f-gpn-v50 220ac  
61f-gpn-v50 240ac  
61f-gpnt 100ac  
61fgpn8230ac  
ap7361-fge-7  
hv2661fg-g  
hv2761fg-g  
mr04x8661fgl  
tb6561fg.8.el  
tb1261fg(tqfp80,20x14mm)toshiba  
ap7361-fge-7  
561-fgsp0100b  
561-fgsp0100n

561-fgsp0125b  
561-fgsp0125n  
561-fgsp0187b  
561-fgsp0187n  
561-fgsp0400b  
561-fgsp0520b  
561-fgsp0520n  
561-fgsp0620b  
561-fgsp0620n  
561-fgsp0850b  
561-fgsp0850n  
561-fgup0100b  
561-fgup0100n  
561-fgup0125b  
561-fgup0125b-spl  
561-fgup0125n  
561-fgup0125n-spl  
561-fgup0187b  
561-fgup0187n  
561-fgup0400b  
561-fgup0400n  
561-fgup0520b  
561-fgup0520b-spl  
561-fgup0520n  
561-fgup0620b  
561-fgup0620n  
561-fgup0850b  
561-fgup0850n  
61f-g ac100/200  
61f-g ac110/220  
61f-g ac120/240  
61f-g1 ac120/240  
61f-g1h ac110/220  
61f-g1h ac120/240v  
61f-g1hn ac110/220  
61f-g1hn ac110/220  
61f-g1n-ac120/240  
61f-g1nd ac110/120  
61f-g1nd ac120/240  
61f-g1nh ac120/240  
61f-g1nl ac110/220 2km  
61f-g1nl ac120/240 2km  
61f-g1nl ac120/240 4km  
61f-g1nr ac110/220  
61f-g1nr ac120/240  
61f-g1p 220ac  
61f-g1p 220ac  
61f-g1p ac110  
61f-g1p ac200  
61f-g1p-ac120

61f-g1p/ac100  
61f-g2 ac120/240  
61f-g2-ac100/200  
61f-g2h ac120/240  
61f-g2n ac100/200  
61f-g2n ac110/220  
61f-g2n ac120/240  
61f-g2nd ac110/220  
61f-g2nd ac120/240  
61f-g2nh ac110/220  
61f-g2nh ac120/240  
61f-g2nl ac110/220 2km  
61f-g2nl ac110/220 4km  
61f-g2nl ac120/240 2km  
61f-g2nl ac120/240 4km  
61f-g2nr ac110/220  
61f-g2p ac100  
61f-g2p ac120  
61f-g2p-ac200  
61f-g2ph ac100  
61f-g3-ac110/220  
61f-g3-ac120/240  
61f-g3h ac100/200  
61f-g3h ac110/220  
61f-g3h ac120/240v  
61f-g3n ac100/200  
61f-g3n ac110/220  
61f-g3n ac120/240  
61f-g3nd ac110/220  
61f-g3nd ac120/240  
61f-g3nh ac110/220  
61f-g3nh ac120/240  
61f-g3nl ac110/220 2km  
61f-g3nl ac110/220 4km  
61f-g3nl ac120/240 2km  
61f-g3nl ac120/240 4km  
61f-g3nr ac110/220  
61f-g3nr ac120/240  
61f-g3t ac110/220  
61f-g3t ac110/220  
61f-g4 ac120/240  
61f-g4h ac110/120  
61f-g4h-ac120/240  
61f-g4n ac110/220  
61f-g4n ac120/240  
61f-g4nd ac110/220  
61f-g4nd ac120/240  
61f-g4nh ac110/220  
61f-g4nh ac120/240  
61f-g4nl ac110/220 2km

61f-g4nl ac110/220 4km  
61f-g4nl ac120/240 2km  
61f-g4nl ac120/240 4km  
61f-g4nr ac110/220  
61f-g4nr ac120/240  
61f-gd ac110/220  
61f-gl ac100/200 2km  
61f-gl ac100/200 2km  
61f-gl ac100/200 4km  
61f-gl ac100/200 4km  
61f-gn ac110/220  
61f-gn ac120/240  
61f-gnd ac110/220  
61f-gnd ac120/240  
61f-gnh ac120/240  
61f-gnl ac110/220 2km  
61f-gnl ac110/220 4km  
61f-gnl ac120/240 2km  
61f-gnl ac120/240 4km  
61f-gnr ac120/240  
61f-gp-n ac100  
61f-gp-n ac110  
61f-gp-n ac220  
61f-gp-n ac24 .  
61f-gp-n ac240  
61f-gp-n-ac120  
61f-gp-n-ac120  
61f-gp-n-ac200  
61f-gp-n2 110vac  
61f-gp-n2 110vac  
61f-gp-n2 220vac  
61f-gp-n2 240  
61f-gp-n2 24vac  
61f-gp-n2-ac120  
61f-gp-n2-ac120  
61f-gp-n8 110ac  
61f-gp-n8 220vac  
61f-gp-n8 220vac  
61f-gp-n8 230ac  
61f-gp-n8 230ac  
61f-gp-n8 230vac  
61f-gp-n8 230vac  
61f-gp-n8 24ac  
61f-gp-n8 ac100  
61f-gp-n8 ac110  
61f-gp-n8 ac120  
61f-gp-n8 ac120  
61f-gp-n8 ac200  
61f-gp-n8 ac24  
61f-gp-n8 ac240

61f-gp-n8-v50 ac110  
61f-gp-n8d ac120  
61f-gp-n8d ac240  
61f-gp-n8h ac120  
61f-gp-n8h ac24  
61f-gp-n8h ac240  
61f-gp-n8hy 110vac  
61f-gp-n8l-2km ac120  
61f-gp-n8l-2km ac240  
61f-gp-n8l-4km ac120  
61f-gp-n8l-4km ac240  
61f-gp-n8y 110vac  
61f-gp-n8y 110vac  
61f-gp-nd ac120  
61f-gp-nd ac200  
61f-gp-nd ac200  
61f-gp-nd-ac100  
61f-gp-nd-ac100  
61f-gp-nh ac100  
61f-gp-nh ac110  
61f-gp-nh ac120  
61f-gp-nh ac200  
61f-gp-nh ac24  
61f-gp-nh3 ac100  
61f-gp-nh3 ac100  
61f-gp-nh3 ac200  
61f-gp-nl 2km ac120  
61f-gp-nl 4km ac120  
61f-gp-nl ac24 4km  
61f-gp-nr-ac100  
61f-gp-nt ac110  
61f-gp-nt ac120  
61f-gp-nt ac240  
61f-gp-nt ac240 .  
61f-gpn-bc 24vdc  
61f-gpn-bc 24vdc  
61f-gpn-bc 24vdc  
61f-gpn-bt 24vdc  
61f-gpn-bt 24vdc  
61f-gpn-v50 ac100  
61f-gpn-v50 ac100  
61f-gpn-v50 ac200  
61f-gpn-v50 ac200  
61f-gpn-v50 ac240  
61f-gpn-v50-ac110  
61f-gpn-v50-ac110  
61f-gpn-v50-ac120  
61f-gpn-v50-ac220  
61f-gpn-v50-ac220  
61f-gpn2 110ac



61f-gpn2 240ac  
61fgpn2230ac  
61fgpn224acce  
61fgpn8110ac  
61fgpn8110ac  
61fgpn8240ac  
61fgpn824ac  
9c08052a2r61fghft  
9c12063a2r61fghft  
ap7361-fge-7  
ap7361-fge-7  
ap7361-fge-7  
bd6961f-ge2  
bd6961f-ge2  
c1210c561fggac7210  
c1210c561fggacauto  
c1210c561fggacauto7210  
c1210c561fggactu  
c1808c361fggac7210  
c1808c361fggacauto  
c1808c361fggacauto7210  
c1808c361fggactu  
c1808c561fggac7210  
c1808c561fggacauto  
c1808c561fggacauto7210  
c1808c561fggactu  
cf361fgk  
cf361fgkw  
chpht0805k1961fgta  
chpht0805k3161fgta  
hv2661fg-g  
hv2661fg-g  
hv2661fg-g m931  
hv2761fg-g  
hv2761fg-g  
hv2761fg-g  
hv2761fg-g m931  
hv461fg-g  
hv461fg-g  
hv461fg-g  
hv461fg-g m931  
nppn161fggn-rc  
nppn261fggn-rc  
pppn061fggn  
som-5761fg-s6a1e  
som-6761fg-s6a1e  
tb6561fg(o,8,el)  
tb6561fg(o,el)  
tb6561fg,8,el  
tb6561fg,8,el

tzm5261f-gs08  
tzm5261f-gs18  
61f-gp-n8 230ac  
61f-gp-n8 230ac omron-ia, на заказ 1-5 дней  
3rb1056-1fg0  
3sb3906-1fg  
61f-g ac120/240  
61f-g1nh ac120/240  
61f-g1nr ac110/220  
61f-g1p ac110  
61f-g1p/ac100  
61f-g2 110/220ac  
61f-g2nd ac110/220  
61f-g2nd ac120/240  
61f-g2nh ac110/220  
61f-g2nl ac110/220 2km  
61f-g2nr ac110/220  
61f-g2p ac100  
61f-g2p ac120  
61f-g2ph ac100  
61f-g3d 110/220ac  
61f-g3h ac100/200  
61f-g3n ac100/200  
61f-g3n ac110/220  
61f-g3n ac120/240  
61f-g3nh ac110/220  
61f-g3nl ac110/220 2km  
61f-g3nl ac110/220 4km  
61f-g3t ac110/220  
61f-g4n ac110/220  
61f-g4n ac120/240  
61f-g4nd ac110/220  
61f-gl ac100/200 2km  
61f-gl ac100/200 4km  
61f-gnd ac110/220  
61f-gnl ac120/240 2km  
61f-gp-n 230vac ce  
61f-gp-n 240ac ce  
61f-gp-n 24ac ce  
61f-gp-n ac100  
61f-gp-n-ac200  
61f-gp-n-tdl ac110v  
61f-gp-n2 110ac ce  
61f-gp-n2 110vac  
61f-gp-n2 220ac  
61f-gp-n2 230ac  
61f-gp-n2 24ac ce  
61f-gp-n2 24vac  
61f-gp-n8 100ac+  
61f-gp-n8 110ac

61f-gp-n8 120ac  
61f-gp-n8 200ac  
61f-gp-n8 220vac  
61f-gp-n8 24ac  
61f-gp-n8-v50 110vac  
61f-gp-n8-v50 230ac  
61f-gp-n8-v50 24vac  
61f-gp-n8d 100ac+  
61f-gp-n8d 110ac+  
61f-gp-n8d 120ac+  
61f-gp-n8d 200ac+  
61f-gp-n8d 220ac+  
61f-gp-n8d 230ac  
61f-gp-n8d 240ac+  
61f-gp-n8d 24ac+  
61f-gp-n8h 100ac+  
61f-gp-n8h 110ac  
61f-gp-n8h 120ac+  
61f-gp-n8h 200ac+  
61f-gp-n8h 220ac  
61f-gp-n8h 230ac  
61f-gp-n8h 24ac  
61f-gp-n8hy 100ac+  
61f-gp-n8hy 110ac+  
61f-gp-n8hy 200ac+  
61f-gp-n8hy 220ac  
61f-gp-n8l 100ac 2km+  
61f-gp-n8l 100ac 4km+  
61f-gp-n8l 110ac 2km  
61f-gp-n8l 110ac 4km  
61f-gp-n8l 120ac 2km+  
61f-gp-n8l 120ac 4km+  
61f-gp-n8l 200ac 2km+  
61f-gp-n8l 200ac 4km+  
61f-gp-n8l 220ac 2km  
61f-gp-n8l 220ac 4km+  
61f-gp-n8l 230ac 2km+  
61f-gp-n8l 230ac 4km+  
61f-gp-n8l 240ac 2km  
61f-gp-n8l 240ac 4km  
61f-gp-n8l 24ac 2km  
61f-gp-n8l 24ac 4km  
61f-gp-n8r 100ac+  
61f-gp-n8r 110ac+  
61f-gp-n8r 120ac+  
61f-gp-n8r 200ac+  
61f-gp-n8r 220ac+  
61f-gp-n8r 230ac+  
61f-gp-n8r 240ac+  
61f-gp-n8r 24ac+

61f-gp-n8y 110ac  
61f-gp-n8y 240ac  
61f-gp-n8y 24ac  
61f-gp-nd ac100  
61f-gp-ne1  
61f-gp-ne2  
61f-gp-nh 100ac  
61f-gp-nh ac110  
61f-gp-nr 100ac  
61f-gp-nt 200ac  
61f-gp-nt ac110  
61f-gpn 110ac  
61f-gpn 200ac  
61f-gpn-bc 24vdc  
61f-gpn-bc 24vdc  
61f-gpn-bt 24vdc  
61f-gpn-bt 24vdc  
61f-gpn-v50 110ac  
61f-gpn-v50 120ac  
61f-gpn-v50 220ac  
61f-gpn-v50 240ac  
61f-gpn-v50-ac110  
61f-gpn2-240ac  
61f-gpnt 100ac  
61fg3ac110220  
61fgpn2230ac  
61fgpn224acce  
61fgpn8110ac  
61fgpn8230ac  
61fgpn8240ac  
61fgpn824ac  
61fgpn8dac120  
chpht0805k3161fgt  
hv2661fg-g  
hv2761fg-g  
m8340107k2261fgd03  
mr04x8661fgl  
p0805h3161fgt  
pht0805e8061fgt  
tb6561fg.8.el  
tb6561fgo.8.el  
561-fgup0100b  
561-fgup0100n  
561-fgup0125b  
561-fgup0125n-spl  
561-fgup0187b  
561-fgup0187n  
561-fgup0400b  
561-fgup0400n  
561-fgup0520b

561-fgup0520b-spl  
561-fgup0520n  
561-fgup0620b  
561-fgup0850b  
561-fgup0850n  
61f-g ac100/200  
61f-g ac110/220  
61f-g ac120/240  
61f-g1 ac120/240  
61f-g1h ac110/220  
61f-g1h ac120/240v  
61f-g1hn ac110/220  
61f-g1n-ac120/240  
61f-g1nd ac110/120  
61f-g1nd ac120/240  
61f-g1nh ac120/240  
61f-g1nl ac110/220 2km  
61f-g1nl ac120/240 2km  
61f-g1nl ac120/240 4km  
61f-g1nr ac110/220  
61f-g1nr ac120/240  
61f-g1p 220ac  
61f-g1p ac110  
61f-g1p ac200  
61f-g1p-ac120  
61f-g1p/ac100  
61f-g2 ac120/240  
61f-g2-ac100/200  
61f-g2h ac120/240  
61f-g2n ac100/200  
61f-g2n ac110/220  
61f-g2n ac120/240  
61f-g2nd ac110/220  
61f-g2nd ac120/240  
61f-g2nh ac110/220  
61f-g2nh ac120/240  
61f-g2nl ac110/220 2km  
61f-g2nl ac110/220 4km  
61f-g2nl ac120/240 2km  
61f-g2nl ac120/240 4km  
61f-g2nr ac110/220  
61f-g2p ac100  
61f-g2p ac120  
61f-g2p-ac200  
61f-g2ph ac100  
61f-g3-ac110/220  
61f-g3-ac120/240  
61f-g3h ac100/200  
61f-g3h ac110/220  
61f-g3h ac120/240v

61f-g3n ac100/200  
61f-g3n ac110/220  
61f-g3n ac120/240  
61f-g3nd ac110/220  
61f-g3nd ac120/240  
61f-g3nh ac110/220  
61f-g3nh ac120/240  
61f-g3nl ac110/220 2km  
61f-g3nl ac110/220 4km  
61f-g3nl ac120/240 2km  
61f-g3nl ac120/240 4km  
61f-g3nr ac110/220  
61f-g3nr ac120/240  
61f-g3t ac110/220  
61f-g4 ac120/240  
61f-g4h ac110/120  
61f-g4h-ac120/240  
61f-g4n ac110/220  
61f-g4n ac120/240  
61f-g4nd ac110/220  
61f-g4nd ac120/240  
61f-g4nh ac110/220  
61f-g4nh ac120/240  
61f-g4nl ac110/220 2km  
61f-g4nl ac110/220 4km  
61f-g4nl ac120/240 2km  
61f-g4nl ac120/240 4km  
61f-g4nr ac110/220  
61f-g4nr ac120/240  
61f-gd ac110/220  
61f-gl ac100/200 2km  
61f-gl ac100/200 4km  
61f-gn ac110/220  
61f-gn ac120/240  
61f-gnd ac110/220  
61f-gnd ac120/240  
61f-gnh ac120/240  
61f-gnl ac110/220 2km  
61f-gnl ac110/220 4km  
61f-gnl ac120/240 2km  
61f-gnl ac120/240 4km  
61f-gnr ac120/240  
61f-gp-n ac100  
61f-gp-n ac110  
61f-gp-n ac220  
61f-gp-n ac24 .  
61f-gp-n ac240  
61f-gp-n-ac200  
61f-gp-n2 110vac  
61f-gp-n2 220vac

61f-gp-n2 240  
61f-gp-n2 24vac  
61f-gp-n8 220vac  
61f-gp-n8 230vac  
61f-gp-n8 ac100  
61f-gp-n8 ac110  
61f-gp-n8 ac200  
61f-gp-n8 ac24  
61f-gp-n8 ac240  
61f-gp-n8d ac120  
61f-gp-n8d ac240  
61f-gp-n8h ac120  
61f-gp-n8h ac24  
61f-gp-n8h ac240  
61f-gp-n8hy 110vac  
61f-gp-n8l-2km ac120  
61f-gp-n8l-2km ac240  
61f-gp-n8l-4km ac120  
61f-gp-n8l-4km ac240  
61f-gp-n8y 110vac  
61f-gp-nd ac120  
61f-gp-nd ac200  
61f-gp-nh ac100  
61f-gp-nh ac110  
61f-gp-nh ac120  
61f-gp-nh ac200  
61f-gp-nh ac24  
61f-gp-nh3 ac100  
61f-gp-nh3 ac200  
61f-gp-nl 2km ac120  
61f-gp-nl 4km ac120  
61f-gp-nl ac24 4km  
61f-gp-nr-ac100  
61f-gp-nt ac110  
61f-gp-nt ac120  
61f-gp-nt ac240  
61f-gpn-bt 24vdc  
61f-gpn-v50 ac200  
61f-gpn-v50 ac240  
61f-gpn-v50-ac120  
ap7361-fge-7  
cf361fgk  
hd614089s-b61 /fgc2202-a  
hd614089s-b61 /fgc2202-a  
hd614089s-b61/fgc2202-a  
hd614089s-b61/fgc2202-a  
hv2661fg-g  
hv461fg-g  
hv461fg-g  
hv461fg-g m931



nppn161fggn-rc  
nppn261fggn-rc  
tb6561fg  
tb6561fg(el)  
tb1261fg(tqfp80,20x14mm)toshiba  
561-fgsp0100b  
561-fgsp0100n  
561-fgsp0125b  
561-fgsp0125n  
561-fgsp0187b  
561-fgsp0187n  
561-fgsp0400b  
561-fgsp0400n  
561-fgsp0520b  
561-fgsp0520n  
561-fgsp0620b  
561-fgsp0620n  
561-fgsp0850b  
561-fgsp0850n  
561-fgup0100b  
561-fgup0100n  
561-fgup0125b  
561-fgup0125b-spl  
561-fgup0125n  
561-fgup0125n-spl  
561-fgup0187b  
561-fgup0187n  
561-fgup0400b  
561-fgup0400n  
561-fgup0520b  
561-fgup0520b-spl  
561-fgup0520n  
561-fgup0620b  
561-fgup0620n  
561-fgup0850b  
561-fgup0850n  
61f-g1ac120/240  
61f-g1hac110/220  
61f-g1hac120/240v  
61f-g1hn ac110/220  
61f-g1n-ac120/240  
61f-g1ndac110/120  
61f-g1ndac120/240  
61f-g1nhac120/240  
61f-g1nlac110/2202km  
61f-g1nlac120/2402km  
61f-g1nlac120/2404km  
61f-g1nrac110/220  
61f-g1nrac120/240  
61f-g1p-ac120

61f-g1p/ac100  
61f-g1pac110  
61f-g2-ac100/200  
61f-g2ac120/240  
61f-g2hac120/240  
61f-g2nac100/200  
61f-g2nac110/220  
61f-g2nac120/240  
61f-g2ndac110/220  
61f-g2ndac120/240  
61f-g2nhac110/220  
61f-g2nhac120/240  
61f-g2nlac110/2202km  
61f-g2nlac110/2204km  
61f-g2nlac120/2402km  
61f-g2nlac120/2404km  
61f-g2nrac110/220  
61f-g2p-ac200  
61f-g2pac100  
61f-g2pac120  
61f-g2phac100  
61f-g3-ac110/220  
61f-g3-ac120/240  
61f-g3hac100/200  
61f-g3hac110/220  
61f-g3hac120/240v  
61f-g3nac100/200  
61f-g3nac110/220  
61f-g3nac120/240  
61f-g3ndac110/220  
61f-g3ndac120/240  
61f-g3nhac110/220  
61f-g3nhac120/240  
61f-g3nlac110/2202km  
61f-g3nlac110/2204km  
61f-g3nlac120/2402km  
61f-g3nlac120/2404km  
61f-g3nrac110/220  
61f-g3nrac120/240  
61f-g3t ac110/220  
61f-g4ac120/240  
61f-g4h-ac120/240  
61f-g4hac110/120  
61f-g4nac110/220  
61f-g4nac120/240  
61f-g4ndac110/220  
61f-g4ndac120/240  
61f-g4nhac110/220  
61f-g4nhac120/240  
61f-g4nlac110/2202km

61f-g4nlac110/2204km  
61f-g4nlac120/2402km  
61f-g4nlac120/2404km  
61f-g4nrac110/220  
61f-g4nrac120/240  
61f-gac100/200  
61f-gac110/220  
61f-gac120/240  
61f-gdac110/220  
61f-gl ac100/200 2km  
61f-gl ac100/200 4km  
61f-gnac110/220  
61f-gnac120/240  
61f-gndac110/220  
61f-gndac120/240  
61f-gnhac120/240  
61f-gnlac110/2202km  
61f-gnlac110/2204km  
61f-gnlac120/2402km  
61f-gnlac120/2404km  
61f-gnrac120/240  
61f-gp-n-ac120  
61f-gp-n-ac200  
61f-gp-n2-ac120  
61f-gp-n2220vac  
61f-gp-n2240  
61f-gp-n224vac  
61f-gp-n8-v50ac110  
61f-gp-n8ac100  
61f-gp-n8ac110  
61f-gp-n8ac120  
61f-gp-n8ac200  
61f-gp-n8ac24  
61f-gp-n8ac240  
61f-gp-n8dac120  
61f-gp-n8dac240  
61f-gp-n8hac120  
61f-gp-n8hac24  
61f-gp-n8hac240  
61f-gp-n8hy110vac  
61f-gp-n8l-2kmac120  
61f-gp-n8l-2kmac240  
61f-gp-n8l-4kmac120  
61f-gp-n8l-4kmac240  
61f-gp-nac100  
61f-gp-nac110  
61f-gp-nac220  
61f-gp-nd ac200  
61f-gp-nd-ac100  
61f-gp-ndac120

61f-gp-nh3ac200  
61f-gp-nhac100  
61f-gp-nhac110  
61f-gp-nhac120  
61f-gp-nhac200  
61f-gp-nhac24  
61f-gp-nl2kmac120  
61f-gp-nl4kmac120  
61f-gp-nlac244km  
61f-gp-nr-ac100  
61f-gp-nt ac240 .  
61f-gp-ntac110  
61f-gp-ntac120  
61f-gpn-bc24vdc  
61f-gpn-bt24vdc  
61f-gpn-v50 ac200  
61f-gpn-v50-ac110  
61f-gpn-v50-ac120  
61f-gpn-v50-ac220  
61f-gpn-v50ac100  
61f-gpn-v50ac240  
61fgpn2ac220  
9c08052a2r61fghft  
9c12063a2r61fghft  
cf361fgk  
cf361fgkw  
hv461fg  
hv461fg-g  
hv461fg-m907  
tb6561fg  
tb6561fg(el)  
tb6561fg(o,el)  
wr06x5361fgl  
2sd2061/fg  
3sb3906-1fg  
561-fgsp0100b  
561-fgsp0100n  
561-fgsp0125b  
561-fgsp0125n  
561-fgsp0187b  
561-fgsp0187n  
561-fgsp0400b  
561-fgsp0400n  
561-fgsp0520b  
561-fgsp0520n  
561-fgsp0620b  
561-fgsp0620n  
561-fgsp0850b  
561-fgsp0850n  
561-fgup0100b

561-fgup0100n  
561-fgup0125b  
561-fgup0125b-spl  
561-fgup0125n  
561-fgup0187b  
561-fgup0187n  
561-fgup0400b  
561-fgup0400n  
561-fgup0520b  
561-fgup0520n  
561-fgup0620b  
561-fgup0620n  
561-fgup0850b  
561-fgup0850n  
61f-g1ac120/240  
61f-g1hac110/220  
61f-g1hac120/240v  
61f-g1ndac110/120  
61f-g1ndac120/240  
61f-g1nh ac120/240  
61f-g1nhac120/240  
61f-g1nl ac110/220 2km  
61f-g1nlac110/2202km  
61f-g1nlac120/2402km  
61f-g1nlac120/2404km  
61f-g1nrac110/220  
61f-g1nrac120/240  
61f-g1p 220ac  
61f-g1p-ac120  
61f-g1pac110  
61f-g2ac120/240  
61f-g2hac120/240  
61f-g2n ac100/200  
61f-g2n ac110/220  
61f-g2n ac120/240  
61f-g2nac100/200  
61f-g2nac110/220  
61f-g2nac120/240  
61f-g2nd ac120/240  
61f-g2ndac110/220  
61f-g2ndac120/240  
61f-g2nh ac110/220  
61f-g2nhac110/220  
61f-g2nhac120/240  
61f-g2nl ac110/220 2km  
61f-g2nl ac120/240 4km  
61f-g2nlac110/2202km  
61f-g2nlac110/2204km  
61f-g2nlac120/2402km  
61f-g2nlac120/2404km

61f-g2nrac110/220  
61f-g2pac100  
61f-g2pac120  
61f-g2phac100  
61f-g3hac100/200  
61f-g3hac110/220  
61f-g3hac120/240v  
61f-g3n ac100/200  
61f-g3n ac110/220  
61f-g3n ac120/240  
61f-g3nac100/200  
61f-g3nac110/220  
61f-g3nac120/240  
61f-g3nd ac110/220  
61f-g3nd ac120/240  
61f-g3ndac110/220  
61f-g3ndac120/240  
61f-g3nh ac110/220  
61f-g3nh ac120/240  
61f-g3nhac110/220  
61f-g3nhac120/240  
61f-g3nl ac110/220 2km  
61f-g3nlac110/2202km  
61f-g3nlac110/2204km  
61f-g3nlac120/2402km  
61f-g3nlac120/2404km  
61f-g3nrac110/220  
61f-g3nrac120/240  
61f-g4ac120/240  
61f-g4hac110/120  
61f-g4n ac110/220  
61f-g4n ac120/240  
61f-g4nac110/220  
61f-g4nac120/240  
61f-g4nd ac120/240  
61f-g4ndac110/220  
61f-g4ndac120/240  
61f-g4nhac110/220  
61f-g4nhac120/240  
61f-g4nl ac110/220 2km  
61f-g4nl ac120/240 2km  
61f-g4nlac110/2202km  
61f-g4nlac110/2204km  
61f-g4nlac120/2402km  
61f-g4nlac120/2404km  
61f-g4nrac110/220  
61f-g4nrac120/240  
61f-gac100/200  
61f-gac110/220  
61f-gac120/240

61f-gdac110/220  
61f-gn ac110/220  
61f-gn ac120/240  
61f-gnac110/220  
61f-gnac120/240  
61f-gnd ac110/220  
61f-gndac110/220  
61f-gndac120/240  
61f-gnhac120/240  
61f-gnl ac110/220 2km  
61f-gnl ac110/220 4km  
61f-gnl ac120/240 2km  
61f-gnl ac120/240 4km  
61f-gnlac110/2202km  
61f-gnlac110/2204km  
61f-gnlac120/2402km  
61f-gnlac120/2404km  
61f-gnrac120/240  
61f-gp-n ac110  
61f-gp-n ac220  
61f-gp-n2 110vac  
61f-gp-n2 220vac  
61f-gp-n2 24vac  
61f-gp-n2-24vac  
61f-gp-n2-ac120  
61f-gp-n2220vac  
61f-gp-n2240  
61f-gp-n224vac  
61f-gp-n8  
61f-gp-n8 110ac  
61f-gp-n8 220vac  
61f-gp-n8 230ac  
61f-gp-n8 230vac  
61f-gp-n8 24ac  
61f-gp-n8 ac240  
61f-gp-n8-v50 ac110  
61f-gp-n8-v50ac110  
61f-gp-n8ac100  
61f-gp-n8ac110  
61f-gp-n8ac120  
61f-gp-n8ac200  
61f-gp-n8ac24  
61f-gp-n8ac240  
61f-gp-n8d  
61f-gp-n8d ac240  
61f-gp-n8dac120  
61f-gp-n8dac240  
61f-gp-n8h  
61f-gp-n8h ac120  
61f-gp-n8hac120



61f-gp-n8hac24  
61f-gp-n8hac240  
61f-gp-n8hy  
61f-gp-n8hy110vac  
61f-gp-n8l  
61f-gp-n8l-2kmac120  
61f-gp-n8l-2kmac240  
61f-gp-n8l-4kmac120  
61f-gp-n8l-4kmac240  
61f-gp-n8l2km  
61f-gp-n8l4km  
61f-gp-n8r  
61f-gp-n8y 110vac  
61f-gp-nac100  
61f-gp-nac110  
61f-gp-nac220  
61f-gp-nd ac120  
61f-gp-nd ac200  
61f-gp-nd-ac100  
61f-gp-ndac120  
61f-gp-nh ac100  
61f-gp-nh ac110  
61f-gp-nh ac120  
61f-gp-nh ac200  
61f-gp-nh3ac200  
61f-gp-nhac100  
61f-gp-nhac110  
61f-gp-nhac120  
61f-gp-nhac200  
61f-gp-nhac24  
61f-gp-nl2kmac120  
61f-gp-nl4kmac120  
61f-gp-nlac244km  
61f-gp-nt ac240 .  
61f-gp-ntac110  
61f-gp-ntac120  
61f-gp-nx  
61f-gpn-bc 24vdc  
61f-gpn-bc24vdc  
61f-gpn-bt 24vdc  
61f-gpn-bt24vdc  
61f-gpn-v50 ac100  
61f-gpn-v50 ac200  
61f-gpn-v50ac100  
61f-gpn-v50ac240  
  
61f-gpn2 110ac  
  
61f-gpn2 240ac  
61fg1ac120240  
61fg1hac110220

61fg1hac120240v  
61fg1hnac110220  
61fg1nac120/240  
61fg1nd ac110/120  
61fg1nd ac120/240  
61fg1nh ac120/240  
61fg1nlac1102202km  
61fg1nlac1202402km  
61fg1nlac1202404km  
61fg1nr ac110/220  
61fg1nr ac120/240  
61fg1pac100  
61fg1pac110  
61fg1pac120  
61fg2ac100200  
61fg2ac120240  
61fg2hac120240  
61fg2n ac100/200  
61fg2n ac110/220  
61fg2n ac120/240  
61fg2nd ac110/220  
61fg2nd ac120/240  
61fg2nh ac110/220  
61fg2nh ac120/240  
61fg2nlac1102202km  
61fg2nlac1102204km  
61fg2nlac1202402km  
61fg2nlac1202404km  
61fg2nr ac110/220  
61fg2pac100  
61fg2pac120  
61fg2pac200  
61fg2phac100  
61fg3ac110220  
61fg3ac120240  
61fg3hac100200  
61fg3hac110220  
61fg3hac120240v  
61fg3n ac100/200  
61fg3n ac110/220  
61fg3n ac120/240  
61fg3nd ac110/220  
61fg3nd ac120/240  
61fg3nh ac110/220  
61fg3nh ac120/240  
61fg3nlac1102202km  
61fg3nlac1102204km  
61fg3nlac1202402km  
61fg3nlac1202404km  
61fg3nr ac110/220

61fg3nr ac120/240  
61fg3tac110220  
61fg4ac120240  
61fg4hac110120  
61fg4hac120240  
61fg4n ac110/220  
61fg4n ac120/240  
61fg4nd ac110/220  
61fg4nd ac120/240  
61fg4nh ac110/220  
61fg4nh ac120/240  
61fg4nlac1102202km  
61fg4nlac1102204km  
61fg4nlac1202402km  
61fg4nlac1202404km  
61fg4nr ac110/220  
61fg4nr ac120/240  
61fgac100200  
61fgac110220  
61fgac120240  
61fgdac110220  
61fglac1002002km  
61fglac1002004km  
61fgn ac110/220  
61fgn ac120/240  
61fgnd ac110/220  
61fgnd ac120/240  
61fgnh ac120/240  
61fgnr ac120/240  
61fgpn  
61fgpn2240  
61fgpn2ac220  
61fgpn8  
  
61fgpn8110ac  
  
61fgpn8240ac  
61fgpn824ac  
61fgpn8ac100  
61fgpn8ac110  
61fgpn8ac200  
61fgpn8d  
61fgpn8dac120  
61fgpn8dac240  
61fgpn8h  
61fgpn8hac24  
61fgpn8hac240  
61fgpn8hy110vac  
61fgpn8l2km  
61fgpn8l2kmac120  
61fgpn8l2kmac240

61fgpn8l4km  
61fgpn8l4kmac120  
61fgpn8l4kmac240  
61fgpn8r  
61fgpn8t  
61fgpnac110  
61fgpnac120  
61fgpnac200  
61fgpnbc24vdc  
61fgpnbt24vdc  
61fgpnd  
61fgpndac100  
61fgpndac120  
61fgpnh  
61fgpnh3ac200  
61fgpnhac110  
61fgpnhac120  
61fgpnhac200  
61fgpnhac24  
61fgpnl2km  
61fgpnl4km  
61fgpnl4kmac120  
61fgpnlac244km  
61fgpnr  
61fgpnrac100  
61fgpnt  
61fgpntac110  
61fgpntac120  
61fgpnv50ac110  
61fgpnv50ac120  
61fgpnv50ac220  
61fgpnv50ac240

9c08052a2r61fghft

9c12063a2r61fghft  
a54sx16-1fg208  
a54sx16-1fg208i  
a54sx16-1fg208m  
a54sx16-1fg208pp  
ap7361-fge-7  
ap7361-fge-7dict  
ap7361-fge-7didkr  
ap7361-fge-7ditr  
cf361fgk  
cf361fgkw  
chpht0805k3161fgt  
cynse20512-2661fgc

dh361fgk  
dt361fgk

hd614089s-b61 /fgc2202-a

hv2661fg-g

hv461fg

hv461fg-g

hv461fg-gm931

hv461fg-m907

hv461fgm931

mho+61fgd

mho+61fgd-r

mho+61fgg

mho+61fgg-r

nppn161fggn-rc

nppn261fggn-rc

p0805h3161fgt

pcm-9361fg-s6a1e

som-5761fg-s6a1e

som-6761fg-s6a1e

tb1261fg

tb6561fg

tb6561fg(el)

tb6561fg(o,el)

tb6561fg,8,el

tb6561fg8elct

tb6561fg8eldkr

tb6561fg8eltr

wr06x5361fgl

61f-gp-n2 24ac

61f-gp-n8 230ac

tb6561fg(o,8,el)

61f-gp-n8 230ac (заказ 3 дня)

561fgsp0100n

561fgsp0125b

561fgsp0125n

561fgsp0187b

561fgsp0187n

561fgsp0400b

561fgsp0520b

561fgsp0620b

561fgsp0620n

561fgsp0850b

561fgsp0850n

561fgup0100b

561fgup0400b

561fgup0520n

561fgup0620b

561fgup0850b

61fgpn2110acce

61fgpn2ac120

61fgpn8

61fgpn8ac110  
61fgpn8ac120  
61fgpnac100  
61fgpnac110  
61fgpnac120  
61fgpnac200  
61fgpnac220  
61fgpnbc24vdc  
61fgpnv50ac110  
61fgpnv50ac120  
ap7361fge  
dh361fgk  
m8340107k2261fgd03  
pppn061fggnrc  
tb6561fg(o8el)  
61f-g1h ac120/240v  
61f-g1p 220ac  
61f-gnl ac110/220 4km  
61f-gp-n8 220vac  
61f-gp-n8 230ac  
61fg1hac110220  
61fg1hac110220  
61fg1hac120240v  
61fg1nac120240  
61fg1nac120240  
61fg1ndac120240  
61fg1ndac120240  
61fg1nlac1102202km  
61fg1nlac1202404km  
61fg1nrac110220  
61fg1nrac110220  
61fg1nrac120240  
61fg1nrac120240  
61fg1pac110  
61fg1pac120  
61fg2ac100200  
61fg2ac100200  
61fg2ac120240  
61fg2ac120240  
61fg2hac120240  
61fg2nac100200  
61fg2nac120240  
61fg2nac120240  
61fg2ndac110220  
61fg2ndac110220  
61fg3nrac120240  
61fgpn2220vac  
61fgpn224vac  
61fgpnac100  
ap7361-fge-7

ap7361-fge-7  
p-1206h3161fgw0  
p1206h3161fg  
p1206h3161fgt  
p1206h3161fgw  
tb6561fg(o,8,el)  
14pfa, цоколь для 61f-g..14 контакт.  
61f-g 110/220ac  
61f-g 120/240ac  
61f-g1 110/220ac  
61f-g1 120/240ac  
61f-g1h 110/220ac  
61f-g1n 120/240ac  
61f-g1nl 110/220ac 2km  
61f-g1nl 110/220ac 4km  
61f-g1p 220ac  
61f-g1p ac120  
61f-g1p ac200  
61f-g1ph ac100  
61f-g1t 110/220ac  
61f-g2 110/220ac  
61f-g2 120/240ac  
61f-g2-tdl 110/220  
61f-g2h 110/220ac  
61f-g2n 120/240ac  
61f-g2nh ac110/220  
61f-g2nh ac120/240  
61f-g2p 110ac  
61f-g2p 220ac  
61f-g3 110/220ac  
61f-g3 120/240ac  
61f-g3d 110/220ac  
61f-g3h 110/220ac  
61f-g3l 110/220ac 2km  
61f-g3l 110/220ac 4km  
61f-g3n 120/240ac  
61f-g3n ac110/220  
61f-g3t 110/220ac  
61f-g4 110/220ac  
61f-g4d 110/220ac  
61f-g4h 110/220ac  
61f-g4n 120/240ac  
61f-gh 110/220ac  
61f-gl 4km 120/240ac  
61f-gn 110/220ac  
61f-gn 120/240ac  
61f-gn ac100/200  
61f-gnl 110/220ac 4km  
61f-gp-n 230vac ce  
61f-gp-n 240ac ce



61f-gp-n 24ac ce  
61f-gp-n ac100  
61f-gp-n-tdl ac110v  
61f-gp-n2 110ac ce  
61f-gp-n2 120ac ce  
61f-gp-n2 220ac  
61f-gp-n2 230ac  
61f-gp-n2 24ac ce  
61f-gp-n2 24ac ce устройство контроля уровня токопроводящих веществ  
61f-gp-n8 100ac+  
61f-gp-n8 110ac  
61f-gp-n8 120ac  
61f-gp-n8 200ac  
61f-gp-n8 24ac  
61f-gp-n8-v50 110vac  
61f-gp-n8-v50 230ac  
61f-gp-n8-v50 24vac  
61f-gp-n8d 100ac+  
61f-gp-n8d 110ac+  
61f-gp-n8d 120ac+  
61f-gp-n8d 200ac+  
61f-gp-n8d 220ac+  
61f-gp-n8d 230ac  
61f-gp-n8d 240ac+  
61f-gp-n8d 24ac+  
61f-gp-n8h 100ac+  
61f-gp-n8h 110ac  
61f-gp-n8h 120ac+  
61f-gp-n8h 200ac+  
61f-gp-n8h 220ac  
61f-gp-n8h 230ac  
61f-gp-n8h 24ac  
61f-gp-n8hy 100ac+  
61f-gp-n8hy 110ac+  
61f-gp-n8hy 200ac+  
61f-gp-n8hy 220ac  
61f-gp-n8l 100ac 2km+  
61f-gp-n8l 100ac 4km+  
61f-gp-n8l 110ac 2km  
61f-gp-n8l 110ac 4km  
61f-gp-n8l 120ac 2km+  
61f-gp-n8l 120ac 4km+  
61f-gp-n8l 200ac 2km+  
61f-gp-n8l 200ac 4km+  
61f-gp-n8l 220ac 2km  
61f-gp-n8l 220ac 4km+  
61f-gp-n8l 230ac 2km+  
61f-gp-n8l 230ac 4km+  
61f-gp-n8l 240ac 2km  
61f-gp-n8l 240ac 4km

61f-gp-n8l 24ac 2km  
61f-gp-n8l 24ac 4km  
61f-gp-n8r 100ac+  
61f-gp-n8r 110ac+  
61f-gp-n8r 120ac+  
61f-gp-n8r 200ac+  
61f-gp-n8r 220ac+  
61f-gp-n8r 230ac+  
61f-gp-n8r 240ac+  
61f-gp-n8r 24ac+  
61f-gp-n8y 110ac  
61f-gp-n8y 240ac  
61f-gp-n8y 24ac  
61f-gp-nd ac100  
61f-gp-ne1  
61f-gp-ne2  
61f-gp-nh 100ac  
61f-gp-nr 100ac  
61f-gp-nt 200ac  
61f-gpn 110ac  
61f-gpn 200ac  
61f-gpn-bc 24vdc  
61f-gpn-bt 24vdc  
61f-gpn-v50 110ac  
61f-gpn-v50 120ac  
61f-gpn-v50 220ac  
61f-gpn-v50 240ac  
61f-gpnt 100ac  
61f-gr 100/200ac  
561-fgsp0400n  
561-fgsp0520n  
561-fgup0125n  
61f-g ac100/200  
61f-g ac110/220  
61f-g ac120/240  
  
61f-g1 ac120/240  
61f-g1ac120/240-nd  
  
61f-g1h ac110/220  
  
61f-g1h ac120/240v  
61f-g1hac110/220-nd  
61f-g1hac120/240v-nd  
61f-g1hn ac110/220  
61f-g1hn ac110/220-nd  
  
61f-g1n-ac120/240  
61f-g1n-ac120/240-nd  
  
61f-g1nd ac110/120

61f-g1nd ac120/240  
61f-g1ndac110/120-nd  
61f-g1ndac120/240-nd

61f-g1nh ac120/240  
61f-g1nhac120/240-nd

61f-g1nl ac110/220 2km

61f-g1nl ac120/240 2km

61f-g1nl ac120/240 4km  
61f-g1nlac110/2202km-nd  
61f-g1nlac120/2402km-nd  
61f-g1nlac120/2404km-nd

61f-g1nr ac110/220

61f-g1nr ac120/240  
61f-g1nrac110/220-nd  
61f-g1nrac120/240-nd  
61f-g1p 220ac-nd

61f-g1p ac110  
61f-g1p ac200  
61f-g1p ac200-nd

61f-g1p-ac120  
61f-g1p-ac120-nd

61f-g1p/ac100  
61f-g1p/ac100-nd  
61f-g1pac110-nd

61f-g2 ac120/240

61f-g2-ac100/200  
61f-g2-ac100/200-nd  
61f-g2ac120/240-nd

61f-g2h ac120/240  
61f-g2hac120/240-nd

61f-g2n ac100/200

61f-g2n ac110/220

61f-g2n ac120/240  
61f-g2nac100/200-nd  
61f-g2nac110/220-nd  
61f-g2nac120/240-nd

61f-g2nd ac110/220

61f-g2nd ac120/240  
61f-g2ndac110/220-nd  
61f-g2ndac120/240-nd

61f-g2nh ac110/220

61f-g2nh ac120/240  
61f-g2nhac110/220-nd  
61f-g2nhac120/240-nd

61f-g2nl ac110/220 2km

61f-g2nl ac110/220 4km

61f-g2nl ac120/240 2km

61f-g2nl ac120/240 4km  
61f-g2nlac110/2202km-nd  
61f-g2nlac110/2204km-nd  
61f-g2nlac120/2402km-nd  
61f-g2nlac120/2404km-nd

61f-g2nr ac110/220  
61f-g2nrac110/220-nd

61f-g2p ac100

61f-g2p ac120

61f-g2p-ac200  
61f-g2p-ac200-nd  
61f-g2pac100-nd  
61f-g2pac120-nd

61f-g2ph ac100  
61f-g2phac100-nd

61f-g3-ac110/220  
61f-g3-ac110/220-nd

61f-g3-ac120/240  
61f-g3-ac120/240-nd

61f-g3h ac100/200

61f-g3h ac110/220

61f-g3h ac120/240v  
61f-g3hac100/200-nd  
61f-g3hac110/220-nd  
61f-g3hac120/240v-nd

61f-g3n ac100/200

61f-g3n ac110/220

61f-g3n ac120/240

61f-g3nac100/200-nd

61f-g3nac110/220-nd

61f-g3nac120/240-nd

61f-g3nd ac110/220

61f-g3nd ac120/240

61f-g3ndac110/220-nd

61f-g3ndac120/240-nd

61f-g3nh ac110/220

61f-g3nh ac120/240

61f-g3nhac110/220-nd

61f-g3nhac120/240-nd

61f-g3nl ac110/220 2km

61f-g3nl ac110/220 4km

61f-g3nl ac120/240 2km

61f-g3nl ac120/240 4km

61f-g3nlac110/2202km-nd

61f-g3nlac110/2204km-nd

61f-g3nlac120/2402km-nd

61f-g3nlac120/2404km-nd

61f-g3nr ac110/220

61f-g3nr ac120/240

61f-g3nrac110/220-nd

61f-g3nrac120/240-nd

61f-g3t ac110/220

61f-g3t ac110/220-nd

61f-g4 ac120/240

61f-g4ac120/240-nd

61f-g4h ac110/120

61f-g4h-ac120/240

61f-g4h-ac120/240-nd

61f-g4hac110/120-nd

61f-g4n ac110/220

61f-g4n ac120/240

61f-g4nac110/220-nd

61f-g4nac120/240-nd

61f-g4nd ac110/220

61f-g4nd ac120/240

61f-g4ndac110/220-nd

61f-g4ndac120/240-nd

61f-g4nh ac110/220

61f-g4nh ac120/240

61f-g4nhac110/220-nd

61f-g4nhac120/240-nd

61f-g4nl ac110/220 2km

61f-g4nl ac110/220 4km

61f-g4nl ac120/240 2km

61f-g4nl ac120/240 4km

61f-g4nlac110/2202km-nd

61f-g4nlac110/2204km-nd

61f-g4nlac120/2402km-nd

61f-g4nlac120/2404km-nd

61f-g4nr ac110/220

61f-g4nr ac120/240

61f-g4nrac110/220-nd

61f-g4nrac120/240-nd

61f-gac100/200-nd

61f-gac110/220-nd

61f-gac120/240-nd

61f-gd ac110/220

61f-gdac110/220-nd

61f-gl ac100/200 2km

61f-gl ac100/200 2km-nd

61f-gl ac100/200 4km

61f-gl ac100/200 4km-nd

61f-gn ac110/220

61f-gn ac120/240

61f-gnac110/220-nd

61f-gnac120/240-nd

61f-gnd ac110/220

61f-gnd ac120/240

61f-gndac110/220-nd

61f-gndac120/240-nd

61f-gnh ac120/240

61f-gnhac120/240-nd

61f-gnl ac110/220 2km

61f-gnl ac110/220 4km

61f-gnl ac120/240 2km

61f-gnl ac120/240 4km  
61f-gnlac110/2202km-nd  
61f-gnlac110/2204km-nd  
61f-gnlac120/2402km-nd  
61f-gnlac120/2404km-nd  
61f-gnr ac120/240  
61f-gnrac120/240-nd  
61f-gp-n ac100  
61f-gp-n ac110  
61f-gp-n ac220  
61f-gp-n ac24 .  
61f-gp-n ac24 .-nd  
61f-gp-n ac240  
61f-gp-n ac240-nd  
61f-gp-n-ac120  
61f-gp-n-ac120-nd  
61f-gp-n-ac200  
61f-gp-n-ac200-nd  
61f-gp-n2 110vac-nd  
  
61f-gp-n2 220vac  
  
61f-gp-n2 240  
  
61f-gp-n2 24vac  
  
61f-gp-n2-ac120  
61f-gp-n2-ac120-nd  
61f-gp-n2220vac-nd  
61f-gp-n2240-nd  
61f-gp-n224vac-nd  
61f-gp-n8  
61f-gp-n8 220vac-nd  
61f-gp-n8 230ac  
61f-gp-n8 230vac-nd  
61f-gp-n8 ac100  
61f-gp-n8 ac110  
61f-gp-n8 ac120  
61f-gp-n8 ac200  
61f-gp-n8 ac24  
61f-gp-n8 ac240  
61f-gp-n8-v50 ac110  
61f-gp-n8-v50ac110-nd  
61f-gp-n8ac100-nd  
61f-gp-n8ac110-nd  
61f-gp-n8ac120-nd  
61f-gp-n8ac200-nd  
61f-gp-n8ac24-nd  
61f-gp-n8ac240-nd  
61f-gp-n8d  
61f-gp-n8d ac120

61f-gp-n8d ac240  
61f-gp-n8dac120-nd  
61f-gp-n8dac240-nd  
61f-gp-n8h  
61f-gp-n8h ac120  
61f-gp-n8h ac24  
61f-gp-n8h ac240  
61f-gp-n8hac120-nd  
61f-gp-n8hac24-nd  
61f-gp-n8hac240-nd  
61f-gp-n8hy  
61f-gp-n8hy 110vac  
61f-gp-n8hy110vac-nd  
61f-gp-n8l  
61f-gp-n8l-2km ac120  
61f-gp-n8l-2km ac240  
61f-gp-n8l-2kmac120-nd  
61f-gp-n8l-2kmac240-nd  
61f-gp-n8l-4km ac120  
61f-gp-n8l-4km ac240  
61f-gp-n8l-4kmac120-nd  
61f-gp-n8l-4kmac240-nd  
61f-gp-n8l2km  
61f-gp-n8l4km  
61f-gp-n8r  
61f-gp-n8y 110vac-nd  
61f-gp-nac100  
61f-gp-nac100-nd  
61f-gp-nac110-nd  
61f-gp-nac220-nd  
61f-gp-nd ac120  
61f-gp-nd ac200  
61f-gp-nd ac200-nd  
61f-gp-nd-ac100  
61f-gp-nd-ac100-nd  
61f-gp-ndac120-nd  
61f-gp-nh ac100  
61f-gp-nh ac110  
61f-gp-nh ac120  
61f-gp-nh ac200  
61f-gp-nh ac24  
61f-gp-nh3 ac100  
61f-gp-nh3 ac100-nd  
61f-gp-nh3 ac200  
61f-gp-nh3ac200-nd  
61f-gp-nhac100-nd  
61f-gp-nhac110-nd  
61f-gp-nhac120-nd  
61f-gp-nhac200-nd  
61f-gp-nhac24-nd



61f-gp-nl 2km ac120  
61f-gp-nl 4km ac120  
61f-gp-nl ac24 4km  
61f-gp-nl2kmac120  
61f-gp-nl2kmac120-nd  
61f-gp-nl4kmac120-nd  
61f-gp-nlac244km-nd  
61f-gp-nr-ac100  
61f-gp-nr-ac100-nd  
61f-gp-nt ac110  
61f-gp-nt ac120  
61f-gp-nt ac240  
61f-gp-nt ac240 .  
61f-gp-nt ac240-nd  
61f-gp-ntac110-nd  
61f-gp-ntac120-nd

61f-gpn-bc 24vdc  
61f-gpn-bc24vdc-nd

61f-gpn-bt 24vdc  
61f-gpn-bt24vdc-nd  
61f-gpn-v50 ac100  
61f-gpn-v50 ac200  
61f-gpn-v50 ac200-nd  
61f-gpn-v50 ac240  
61f-gpn-v50-ac110  
61f-gpn-v50-ac110-nd  
61f-gpn-v50-ac120  
61f-gpn-v50-ac120-nd  
61f-gpn-v50-ac220  
61f-gpn-v50-ac220-nd  
61f-gpn-v50ac100-nd  
61f-gpn-v50ac240-nd

61f-gpn2 110ac

61f-gpn2 240ac

61fgpn8110ac

61fgpn8240ac

9c08052a2r61fghft

9c12063a2r61fghft  
a54sx16-1fg208  
a54sx16-1fg208i  
a54sx16-1fg208m  
a54sx16-1fg208pp  
ap7361-fge-7dict-nd  
ap7361-fge-7didkr-nd

ap7361-fge-7dtr-nd  
cf361fgk  
cf361fgkw  
dh361fgk  
hv2661fg-g-nd  
hv2761fg-g-nd  
hv461fg  
hv461fg-g  
hv461fg-g-nd  
hv461fg-gm931  
mho+61fgd  
mho+61fgd-r  
mho+61fgg  
mho+61fgg-r  
nppn161fggn-rc-nd  
nppn261fggn-rc-nd  
pcm-9361fg-s6a1e  
som-5761fg-s6a1e  
som-6761fg-s6a1e  
tb6561fg8elct-nd  
tb6561fg8eldkr-nd  
tb6561fg8eltr-nd

## **Реле Omron 61f, Минск** т.80447584780

**www.fotorele.net www.tiristor.by радиодетали, электронные компоненты**  
**email minsk17@tut.by tel.+375 29 758 47 80 МТС**

[омрон, Omron, каталог, описание, технические, характеристики, datasheet, параметры, маркировка, габариты, фото, даташит, спецификация, сайт, Беларусь, Минск, продажа, купить, аналог, замена, 61f](#)

# Conductive Level Controller 61F-GP-N2

CSM\_61F-GP-N2\_DS\_E\_1\_4

## Automatic Water Supply and Drainage Control

- Ideal for level control of any conductive liquid.
- Compact plug-in controller for single- or two-point control of conductive liquid level.
- 24/110/120/220/230/240 VAC operation possible.
- Easy installation on DIN rail.
- Low voltage (AC) electrodes.
- Full surge protection.



## Ordering Information

Compact plug-in conductive level controller	61F-GP-N2
---	-----------

When placing your order, be sure to specify the desired operating voltage.

Example: 61F-GP-N2 120 VAC  
└──────────┘ Rated supply voltage

## ■ Accessories (Order Separately)

### Selection Guide for Electrode Holders and Separators

#### Electrode Holders

Applications	For city water and other general-use electrodes. Easy-to-replace separate versions facilitate maintenance of electrodes.	When mounting space is limited. Special 3-pole holder of small size and light weight. Ideal for soft drink vendors, etc., where only limited space is available.	For low specific liquids. Used for sewage, sea water, etc., having a low specific resistance. In sewage use, electrode holders must be installed 10 to 20 cm apart from one another. For acids, alkalis and sea water, electrode holders may be as much as 1 meter apart to operate properly.	When resistance to high pressure is required. Ideal for use in tanks where temperature or pressure inside the tank is high, e.g. 250°C
<b>Mounting style</b>	Flange	Screw	Flange	Screw
<b>Insulator material</b>	Phenol resin	Phenol resin	Ceramics	Fluorine Resin
<b>Max. temperature</b>		70°C (without water drips or vapour on the surface of the electrode holder)	150°C (without water drips or vapour on the surface of the electrode holder)	250°C (without water drips or vapour on the surface of the electrode holder)
<b>No. of electrodes</b>	1	---	BF-1	BS-1
	3	PS-3S	PS-31	---

#### Electrode Separators

No. of electrodes	Model
1	F03-14-1P
3	F03-14-3P

## Selection Guide for Electrodes, Connecting and Lock Nuts

Applicable liquids	Material	Models for individual electrode assembly components					
		Electrode (1m long)		Connecting nut		Lock nut	
		Model	Indication mark	Model	Inscription	Model	Inscription
Purified city water, industrial water, sewage	SUS-304 (AISI-304)	F03-01-SUS304	1 line	F03-02-SUS304	---	F03-03-SUS304	---
Purified city water, industrial water, sewage, dilute alkaline solution	SUS316 (AISI-316)	F03-01-SUS316	2 lines	F03-02-SUS316	6	F03-03-SUS316	6

## Application Example

- Level control in tanks, reservoirs, sewage plants, underground wells, mixing plants etc.
- Level control for element protection in pipes, channels, and irrigation systems.
- Flow detection in pipes, channels, and irrigation systems.
- Ice bank control in cold drink dispensers, ice makers, water chillers, bulk milk tanks, etc.
- Dispensing of liquids by volume.
- Indication of liquid buildup due to filter blockages.
- Pollution/foul water detection for rivers, drains, etc.
- Alarm control warning of abnormal or dangerously high or low levels.

## Specifications

Supply voltage	24, 110, 120, 220, 230, 240 VAC; 50/60 Hz
Operating voltage range	85% to 110% of rated voltage
Interelectrode voltage*	8 VAC
Power consumption	Approx. 3.2 VA
Operate resistance	Approx. 4 K $\Omega$ min. Between electrode E1 and E3
Release resistance	Approx. 15 K $\Omega$ max. Between electrode E2 and E3
Response time	Operate: 80 ms max., Release: 160 ms max.
Control output	10 A, 250 VAC (at 40°C) 3 A, 250 VAC (at 55°C)
Insulation resistance	100 M $\Omega$ max. (at 500 VDC) between power terminals and electrode terminals, and between electrode terminals and contact terminals
Dielectric strength	2,000 VAC, 50/60 Hz for 1 min., between power terminals and electrode terminals, and between electrode terminals and contact terminals
Ambient temperature	Operating: -10°C to 55°C
Ambient humidity	Operating: 45% to 85%
Life expectancy	Mechanical: 10,000,000 operations min.
Weight	Approx. 190 g
Approved standards	UL508, CSA C22.2 No.14, EN61010-1, EN61326-1 Industrial electromagnetic environment

\*Secondary voltage of transformer

# Connections

## Automatic Water Supply and Drainage Control

### 1. Water supply

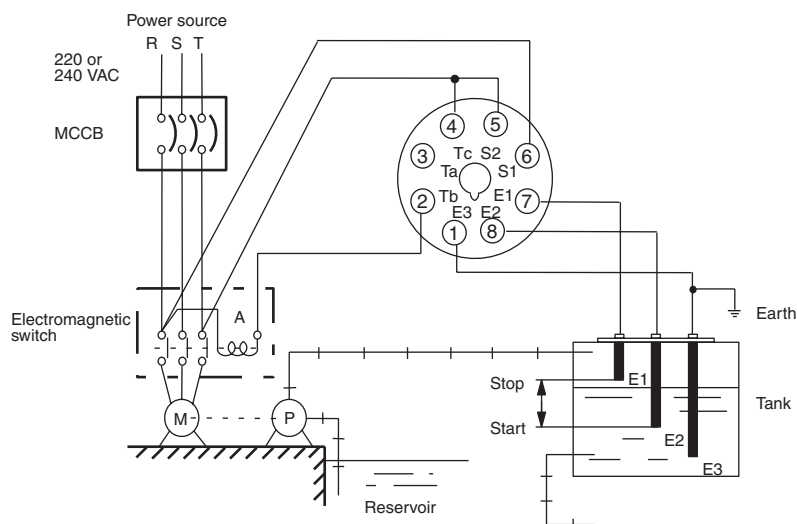
- Connect electromagnetic switch coil terminal A to Tb.
- The pump stops when the water level reaches E1 and starts when the water level drops below E2.

### 2. Drainage

- Connect the electromagnetic switch coil terminal A to Ta.
- The pump starts when the water level reaches E1 and stops when the water level drops below E2.

**Note: 1.** The diagram shows the connections for water supply. When draining, change the connection Tb to Ta.

**2.** The earth terminal must be grounded.



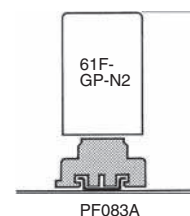
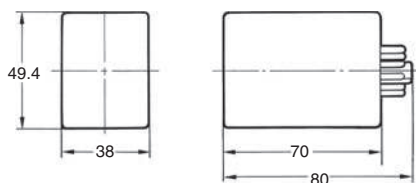
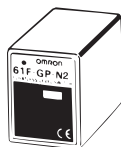
## Operation

The conductive type level controller consists of a plug-in controller connected to a set of stainless steel probes. These are cut to length and inserted vertically into the liquid. A low voltage is applied between these probes and the earth probe (or tank, if it is electrically conductive). The water provides a current between the earth probe and the high-level probe. The output relay in the controller is energized when the water level reaches the high-level probe and de-energized when the water level falls below it.

For two-point control a low-level probe is used as well. In this case the relay does not de-energize until the water level falls below the low-level probe. Using the low-level probe allows a wide differential between switching a pump on and off, and can avoid excessive pump operation during tank emptying or filling. If this differential is not required, the low-level probe need not be connected.

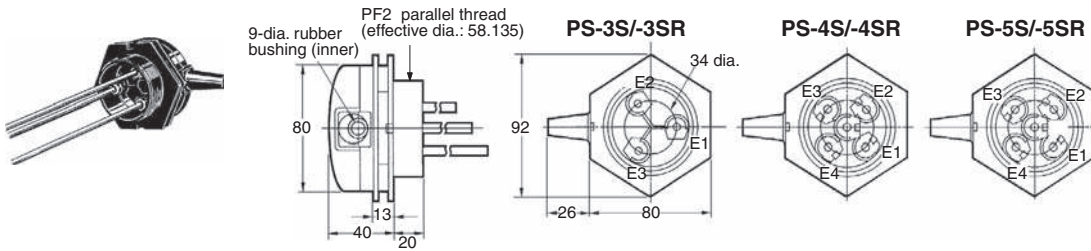
## Dimensions

**Note:** All units are in millimeters unless otherwise indicated.



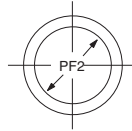
■ Electrode Holders

**PS-3S**



Mounting Holes

Screw Holes

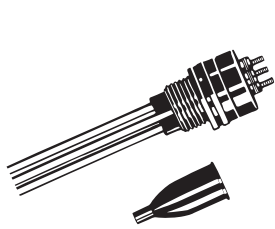


Used with coupling

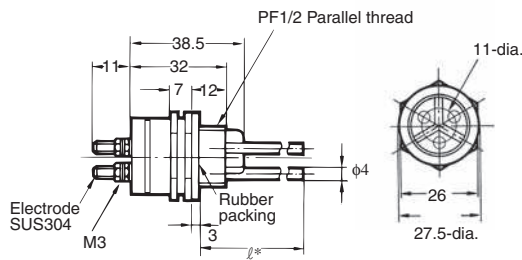


Used with mounting bracket

**PS-31**



Dust preventive rubber cap (optional)

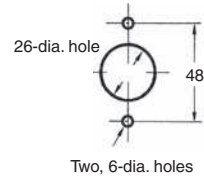
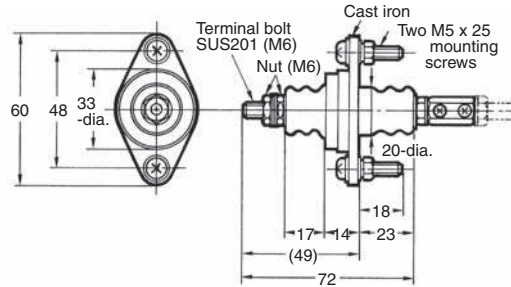


Mounting Holes



\* Standard holder construction includes three integral 300 mm length electrodes. However, a type having 1,000 mm length electrodes is available on request.

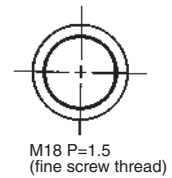
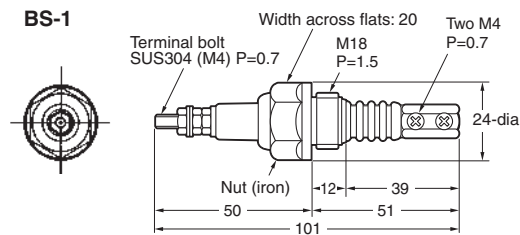
**BF-1**



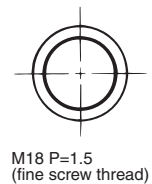
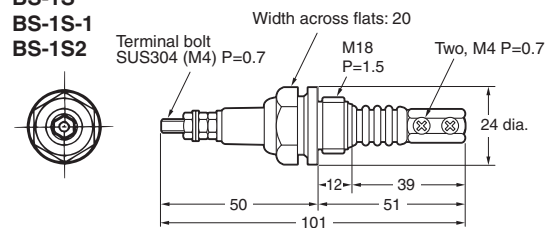
**BS-1(S)**



**BS-1**

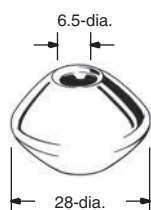


**BS-1S**  
**BS-1S-1**  
**BS-1S2**

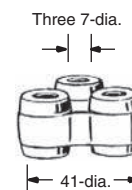


## Electrode Separators

### F03-14 1P (for Single Pole)



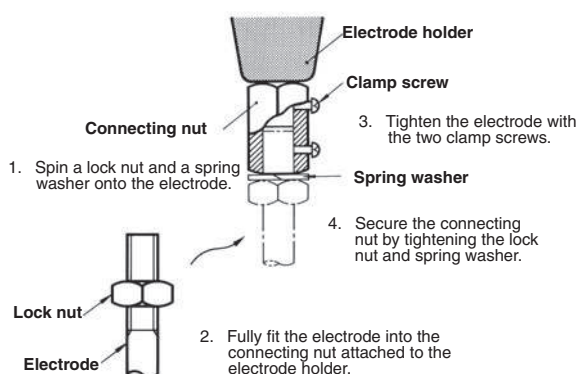
### F03-14 3P (for Three Poles)



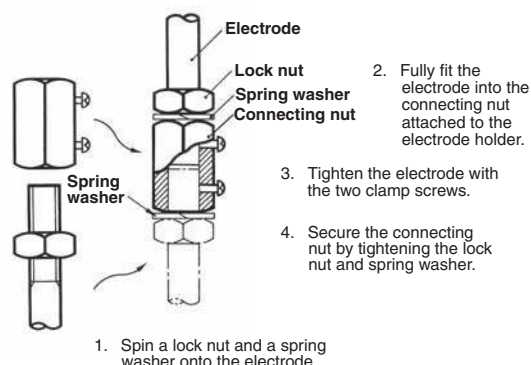
## Precautions

### How to Mount Electrodes

#### Connecting Electrodes to Electrode Holders



#### Connecting One Electrode to Another



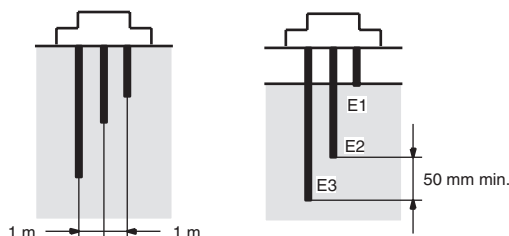
### Application

When using electrodes in sea water or sewage, provide a sufficient interval (normally 1 m) between the electrodes. If the sufficient interval cannot be provided, employ a low-sensitivity type Floatless Level Controller.

When taping one of the electrodes to prevent it from contacting the other electrodes in water, do not tape the electrode entirely but leave at least 100 mm of its end uncovered.

When the required length of the electrode is more than 1 m, use a separator at each joint of two electrodes so as to prevent the electrodes from contacting one another. (NOTE: Avoid use of the separators in dust-containing liquids.)

Usually, electrodes are used in a set of three: long, medium, and short. Connect the short electrode to E1, the medium electrode to E2, and the long electrode to E3. Make E3 at least 50 mm longer than E2.



Electrodes are in actual contact with the liquid. Standard electrodes are made of stainless steel and usable in purified water, sea water, sewage, acid (except acetic acid, sulfuric acid, etc.) and alkaline liquids, although they may corrode depending upon the temperature and working conditions.

Note that the Conductive Level Controller 61F-GP-N2 is capable of controlling liquids with specific resistances of up to 30 kΩ-cm when the controller employs a type PS-3S electrode holder with the electrode(s) submerged to a depth of 30 mm max.

Kind of water	Specific resistance	Applicable type
City water	5 to 10 kΩ-cm	General-purpose type
Well water	2 to 5 kΩ-cm	General-purpose type
Industrial water	5 to 15 kΩ-cm	General-purpose type
Rainwater	15 to 25 kΩ-cm	General-purpose type
Sea water	0.03 kΩ-cm	Low-sensitivity type
Sewage	0.5 to 2 kΩ-cm	Low-sensitivity type
Distilled water	100 kΩ-cm or less	High-sensitivity type
	Over 100 kΩ-cm	Consult OMRON

## ■ Safety Precautions

### ⚠ WARNING

Do not touch the terminals while power is being supplied. Doing so may possibly result in electric shock. Make sure that the terminal cover is installed before using the product.



### ⚠ CAUTION

Do not attempt to disassemble, repair, or modify the product. Doing so may occasionally result in minor or moderate injury due to electric shock.



- Check the application and power supply. Power supply (AC 220 V, AC 230 V) consists of other specifications. If the power voltage is not AC 200 V or AC 100 V, follow the instructions described on the device.
- Firmly ground the earth terminal No.4.
- Make sure that electrode probes in the liquid do not come in contact one another as it may cause malfunction. Use separator when connecting.
- Tighten nuts for electrode probe(s) firmly.
- Prevent flottage from attaching to electrode.
- This device is not available when the resistance is too high and is not conductive such as oil.

## Precautions for Safe Use

### 1. Precautions for the environment

- Use and preserve within the proper temperature and humidity described in the specifications.
- Temperature of surroundings for preservation (including during transportation) and use: -10 to 55°C, humidity: 45 to 85%.
- Do not install, among others, near heat devices such as coils or other devices having coils, etc.
- Avoid preserving (including during transportation) and using in a humid place, in a corrosive gas environment, outdoors and in a place which receives direct sunlight.
- Preserve and use without exposing to danger of explosion, flammable dust, gas and vapor, excessive dust, and saline spray or droplets.
- Avoid preserving (including during transportation) and using in a place which is vulnerable to flooding or oil spillage.
- Avoid preserving (including during transportation) and using in a place where vibrations and impacts are strong. Similarly, avoid using next to a high-capacity contactor which may impacts at operation. Doing so causes malfunctions such as chattering, etc.
- Do not install the product near devices generating strong high-frequency waves or surges. When using a noise filter, check the voltage and current and install it as close to the product as possible.

### 2. Cautions for Use

- Read the instruction manual and catalog before operating and maintaining the product.
- Fit socket(s) and DIN rail(s) so that the screws are tight. If the screws are not tight, DIN rail(s), socket(s), the product and cable(s) may lead to come off.
- Be sure to fit socket(s) to DIN rail(s) without fail.
- Use metal strengthener(s) to maintain a firm connection between the product and socket(s).
- Read the instructions manual and catalog before the operation and maintenance of the product.
- When fitting crimping terminal(s) to terminal screw(s), use a tightening torque of between 0.45 and 0.6 N·m
- Use power supply of appropriate specifications to provide control source(s), inputs, etc., and to wire cables.  
[Recommended cable to wire between the model 61F and electrode(s) when using three-core cable(s) of completely insulated 600 V 0.75 mm VCT: 50 m max.]
- Do not put power line(s), high-voltage cable(s) and wire(s) of electrode circuit(s) in the same duct nor wire closely. Doing so causes malfunctions by getting vulnerable to induction noise.
- Shorten the distance for wiring between the model 61F and electrode holders as much as possible. Long distance for wiring may causes malfunctions because stray capacitance may influence operation, or abnormal surges or noise may run through electrode circuit(s).
- Be sure to ground common electrode terminal(s). Doing so can reduce some effects of noise.
- Use the product within the noted supply voltage and rated load.
- Before using, recheck the application, wiring, power supply, etc.

ALL DIMENSIONS SHOWN ARE IN MILLIMETERS.

To convert millimeters into inches, multiply by 0.03937. To convert grams into ounces, multiply by 0.03527.

In the interest of product improvement, specifications are subject to change without notice.



## Terms and Conditions Agreement

### Read and understand this catalog.

Please read and understand this catalog before purchasing the products. Please consult your OMRON representative if you have any questions or comments.

### Warranties.

(a) Exclusive Warranty. Omron's exclusive warranty is that the Products will be free from defects in materials and workmanship for a period of twelve months from the date of sale by Omron (or such other period expressed in writing by Omron). Omron disclaims all other warranties, express or implied.

(b) Limitations. OMRON MAKES NO WARRANTY OR REPRESENTATION, EXPRESS OR IMPLIED, ABOUT NON-INFRINGEMENT, MERCHANTABILITY OR FITNESS FOR A PARTICULAR PURPOSE OF THE PRODUCTS. BUYER ACKNOWLEDGES THAT IT ALONE HAS DETERMINED THAT THE PRODUCTS WILL SUITABLY MEET THE REQUIREMENTS OF THEIR INTENDED USE.

Omron further disclaims all warranties and responsibility of any type for claims or expenses based on infringement by the Products or otherwise of any intellectual property right. (c) Buyer Remedy. Omron's sole obligation hereunder shall be, at Omron's election, to (i) replace (in the form originally shipped with Buyer responsible for labor charges for removal or replacement thereof) the non-complying Product, (ii) repair the non-complying Product, or (iii) repay or credit Buyer an amount equal to the purchase price of the non-complying Product; provided that in no event shall Omron be responsible for warranty, repair, indemnity or any other claims or expenses regarding the Products unless Omron's analysis confirms that the Products were properly handled, stored, installed and maintained and not subject to contamination, abuse, misuse or inappropriate modification. Return of any Products by Buyer must be approved in writing by Omron before shipment. Omron Companies shall not be liable for the suitability or unsuitability or the results from the use of Products in combination with any electrical or electronic components, circuits, system assemblies or any other materials or substances or environments. Any advice, recommendations or information given orally or in writing, are not to be construed as an amendment or addition to the above warranty.

See <http://www.omron.com/global/> or contact your Omron representative for published information.

### Limitation on Liability; Etc.

OMRON COMPANIES SHALL NOT BE LIABLE FOR SPECIAL, INDIRECT, INCIDENTAL, OR CONSEQUENTIAL DAMAGES, LOSS OF PROFITS OR PRODUCTION OR COMMERCIAL LOSS IN ANY WAY CONNECTED WITH THE PRODUCTS, WHETHER SUCH CLAIM IS BASED IN CONTRACT, WARRANTY, NEGLIGENCE OR STRICT LIABILITY.

Further, in no event shall liability of Omron Companies exceed the individual price of the Product on which liability is asserted.

### Suitability of Use.

Omron Companies shall not be responsible for conformity with any standards, codes or regulations which apply to the combination of the Product in the Buyer's application or use of the Product. At Buyer's request, Omron will provide applicable third party certification documents identifying ratings and limitations of use which apply to the Product. This information by itself is not sufficient for a complete determination of the suitability of the Product in combination with the end product, machine, system, or other application or use. Buyer shall be solely responsible for determining appropriateness of the particular Product with respect to Buyer's application, product or system. Buyer shall take application responsibility in all cases.

NEVER USE THE PRODUCT FOR AN APPLICATION INVOLVING SERIOUS RISK TO LIFE OR PROPERTY OR IN LARGE QUANTITIES WITHOUT ENSURING THAT THE SYSTEM AS A WHOLE HAS BEEN DESIGNED TO ADDRESS THE RISKS, AND THAT THE OMRON PRODUCT(S) IS PROPERLY RATED AND INSTALLED FOR THE INTENDED USE WITHIN THE OVERALL EQUIPMENT OR SYSTEM.

### Programmable Products.

Omron Companies shall not be responsible for the user's programming of a programmable Product, or any consequence thereof.

### Performance Data.

Data presented in Omron Company websites, catalogs and other materials is provided as a guide for the user in determining suitability and does not constitute a warranty. It may represent the result of Omron's test conditions, and the user must correlate it to actual application requirements. Actual performance is subject to the Omron's Warranty and Limitations of Liability.

### Change in Specifications.

Product specifications and accessories may be changed at any time based on improvements and other reasons. It is our practice to change part numbers when published ratings or features are changed, or when significant construction changes are made. However, some specifications of the Product may be changed without any notice. When in doubt, special part numbers may be assigned to fix or establish key specifications for your application. Please consult with your Omron's representative at any time to confirm actual specifications of purchased Product.

### Errors and Omissions.

Information presented by Omron Companies has been checked and is believed to be accurate; however, no responsibility is assumed for clerical, typographical or proofreading errors or omissions.

2015.8

In the interest of product improvement, specifications are subject to change without notice.

**OMRON Corporation**  
Industrial Automation Company

<http://www.ia.omron.com/>

(c)Copyright OMRON Corporation 2015 All Right Reserved.

# Conductive Level Controller 61F-GP-N8

## Compact Plug-in Level Controllers for Single or Two-point Level Control of Conductive Materials (Liquids and Solids)

- Wide range of models: long-distance, high and low-sensitivity, and two-wired types available.
- 24/100/110/120/200/220/230/240 VAC operation possible.
- Easy installation on DIN track.
- Low-voltage (AC) electrodes.
- Red LED operation indicator provided.
- Conforms to EMC and LVD Directives.
- UL/CSA approved.



Level Controllers

## Model Number Structure

### Model Number Legend

61F-GP-N8□  
1 2 3

1. Plug-in Type
2. Compact 8-pin Type

3. Applications
  - None: General-purpose type
  - L: Long-distance type
  - H: High-sensitivity type (reverse acting)
  - HY: High-sensitivity type (standard acting)
  - D: Low-sensitivity type
  - R: Two-wired type

## Ordering Information

### List of Models

Application	Model number	
General-purpose type	61F-GP-N8	
Long-distance type	2 km	61F-GP-N8L 2KM
	4 km	61F-GP-N8L 4KM
High-sensitivity type	61F-GP-N8H	
Low-sensitivity type	61F-GP-N8D	
Two-wired type	61F-GP-N8R	

## ■ Accessories (Order Separately)

### Selection Guide for Electrode Holders and Separators

#### Electrode Holders

<b>Applications</b>	For city water and other general-use electrodes. Easy-to-replace separate versions facilitate maintenance of electrodes.	When mounting space is limited. Special 3-pole holder of small size and light weight. Ideal for soft drink vendors, etc., where only limited space is available.	For low specific liquids. Used for sewage, sea water, etc., having a low specific resistance. In sewage use, electrode holders must be installed 10 to 20 cm apart from one another. For acids, alkalis and sea water, electrode holders may be as much as 1 meter apart to operate properly.	When resistance to high pressure is required. Ideal for use in tanks where temperature or pressure inside the tank is high, e.g. 250°C	
<b>Mounting style</b>	Flange	Screw	Flange	Screw	
<b>Insulator material</b>	Phenol resin	Phenol resin	Ceramics	Teflon	
<b>Max. temperature</b>	70°C		150°C (without water drips or vapor on the surface of the electrode holder)	250°C (without water drips or vapor on the surface of the electrode holder)	
<b>No. of electrodes</b>	1	---	---	BF-1	BS-1
	3	PS-3S	PS-31	---	---

#### Electrode Separators

No. of electrodes	Model
1	F03-14 1P
3	F03-14 3P

### Selection Guide for Electrodes, Connecting, and Lock Nuts

Applicable liquids	Material	Models for individual electrode assembly components					
		Electrode (1m long)		Connecting nut		Lock nut	
		Model	Indication mark	Model	Inscription	Model	Inscription
Purified city water, industrial water, sewage	Equivalent to SUS 304 (AISI-304)	F03-01 SUS201	1 line	F03-02 SUS201	---	F03-03 SUS201	---
Purified city water, industrial water, sewage, dilute alkaline solution	SUS316 (AISI-316)	F03-01 SUS316	2 lines	F03-02 SUS316	6	F03-03 SUS316	316

# Specifications

## ■ Ratings and Characteristics

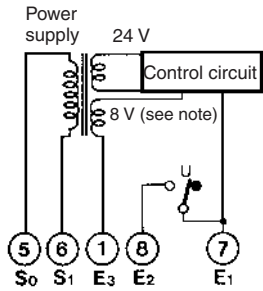
Model/Items	General-purpose Controller 61F-GP-N8	Long-distance Controllers 61F-GP-N8L 2KM (for 2 km) 61F-GP-N8L 4KM (for 4 km)	High-sensitivity Controllers 61F-GP-N8H 61F-GP-N8HY (see note 1)	Low-sensitivity Controller 61F-GP-N8D	Two-wired Controller 61F-GP-N8R
<b>Controlling materials and operating conditions</b>	For control of ordinary purified water or sewage water	For control of ordinary purified water in cases where the distance between sewage pumps and water tanks or between receiver tanks and supply tanks is long or where remote control is required.	For control of liquids with high specific resistance such as distilled water	For control of liquids with low specific resistance such as salt water, sewage water, acid chemicals, alkali chemicals	For control of ordinary purified water or sewage water used in combination with two-wired-type electrode holder (incorporating a resistor of 6.8 kΩ)
<b>Supply voltage</b>	24, 100, 110, 120, 200, 220, 230 or 240 VAC; 50/60 Hz				
<b>Operating voltage range</b>	85% to 110% of rated voltage				
<b>Interelectrode voltage</b>	8 VAC		24 VAC	8 VAC	
<b>Interelectrode current</b>	Approx. 1 mA AC max.		Approx. 0.4 mA AC max.	Approx. 1 mA AC max.	
<b>Power consumption</b>	Approx. 3.5 VA max.				
<b>Interelectrode operate resistance</b>	Approx. 0 to 4 kΩ	Approx. 0 to 1.3 kΩ (for 2 km) Approx. 0 to 0.5 kΩ (for 4 km)	Approx. 15 kΩ to 70 kΩ (see note 3)	Approx. 0 to 1.3 kΩ	Approx. 0 to 2 kΩ
<b>Interelectrode release resistance</b>	Approx. 15 k to ∞ Ω	Approx. 4 k to ∞ Ω (for 2 km) Approx. 2.5 k to ∞ Ω (for 4 km)	Approx. 300 k to ∞ Ω	Approx. 4 k to ∞ Ω	Approx. 15 k to ∞ Ω
<b>Response time</b>	Operate: 80 ms max. Release: 160 ms max.				
<b>Cable length (see note 2)</b>	1 km max.	2 km max. 4 km max.	50 m max.	1 km max.	800 m max.
<b>Control output</b>	1 A, 250 VAC (Inductive load: $\cos\phi = 0.4$ ) 3 A, 250 VAC (Resistive load)				
<b>Ambient temperature</b>	Operating: -10°C to 55°C				
<b>Ambient humidity</b>	Operating: 45% to 85% RH				
<b>Insulation resistance (see note 3)</b>	100 MΩ max. (at 500 VDC)				
<b>Dielectric strength (see note 4)</b>	2000 VAC, 50/60 Hz for 1 min.				
<b>Life expectancy</b>	Electrical: 100,000 operations min. Mechanical: 5,000,000 operations min.				

- Note:**
1. The relay in the 61F-GP-N8H de-energizes when there is water present across the electrodes, whereas the relay in the 61F-GP-N8HY energizes when there is water present across the electrodes.
  2. The length when using completely-insulated, 600-V, 3-conductor (0.75 mm<sup>2</sup>) cable type cables. Usable cable lengths will become shorter as the cable diameter or number of conductors becomes larger.
  3. The insulation resistance and dielectric strength indicate values between power terminals and electrode terminals, between power terminals and contact terminals, and between electrode terminals and contact terminals.
  4. Possible to use with 10 kΩ or less, however, this may cause reset failure.

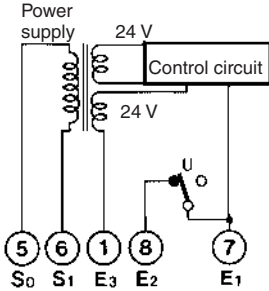
# Connections

## Internal Circuit Diagrams

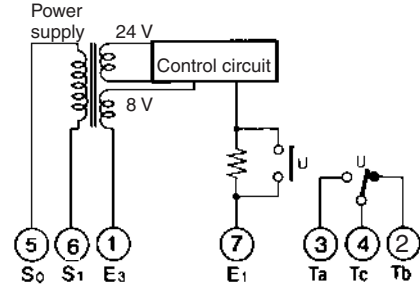
61F-GP-N8/-N8L/-N8D/-N8HY



61F-GP-N8H



61F-GP-N8R



Note: 24 V for the 61F-GP-N8HY.

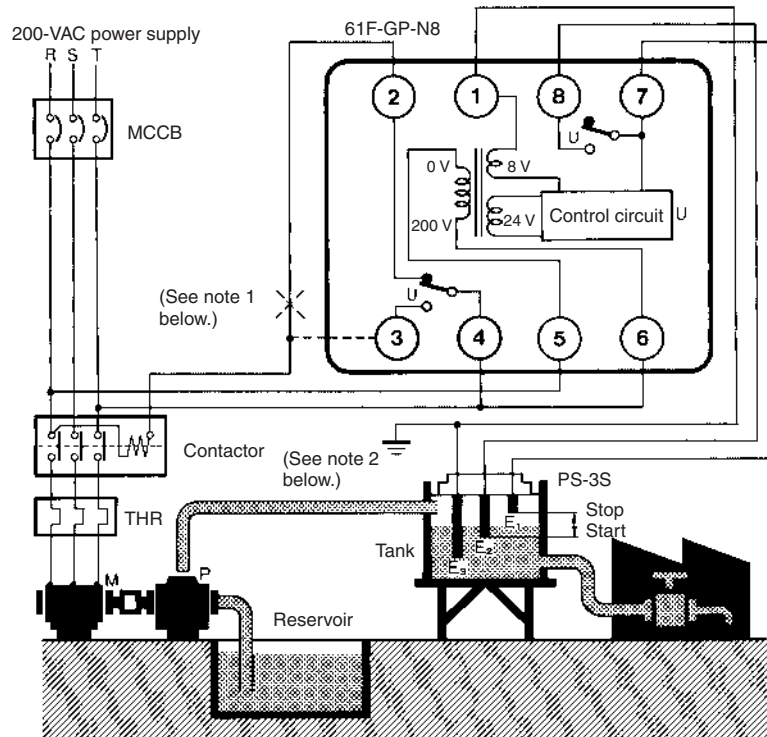
## Automatic Water Supply and Drainage Control

### 1. Water Supply

- Connect electromagnetic switch coil terminal A to terminal 2.
- The pump stops when the water level reaches E1 and starts when the water level drops below E2.

### 2. Drainage

- Connect the electromagnetic switch coil terminal A to terminal 3.
- The pump starts when the water level reaches E1 and stops when the water level drops below E2.



- Note: 1. The diagram shows the connections for water supply. When draining, change the connection from terminal 2 to terminal 3.  
 2. The earth terminal must be earthed.

# Operation

The Conductive Level Controller consists of a plug-in controller connected to a set of stainless steel probes. These are cut to length and inserted vertically into the liquid. A low voltage is applied between these probes and the earth probe (or tank, if it is electrically conductive). The water provides a current between the earth probe and the high-level probe. The output relay in the Controller is energized when the water level reaches the high-level probe and de-energized when the water level falls below it.

For two-point control a low-level probe is used as well. In this case the relay does not de-energize until the water level falls below the low-level probe. Using the low-level probe allows a wide differential between switching a pump on and off, and can avoid excessive pump operation during tank emptying or filling. If this differential is not required, the low-level probe need not be connected.

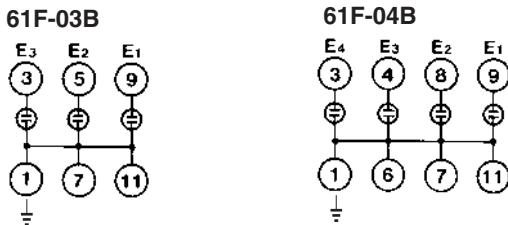
## Surge Suppressor Unit (61F-03B/04B)

A high-capacity protective device is available which protects 61F-series Floatless Level Controllers against faults arising from electrical surges (such as indirect strokes of lightning) when the Controllers are employed in elevated water tanks or in high-altitude locations.

### Specifications

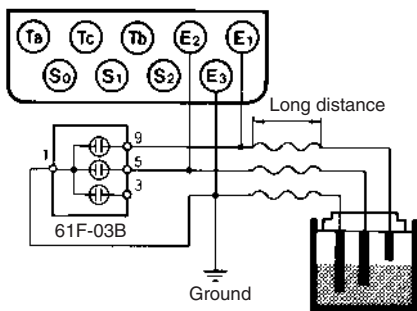
<b>Discharge start voltage</b>	90 V ±20 VDC
<b>Impulse withstand voltage</b>	200,000 V (1 x 40 μs)
<b>Impulse withstand current</b>	6,000 A (1 x 40 μs)

### Internal Connections

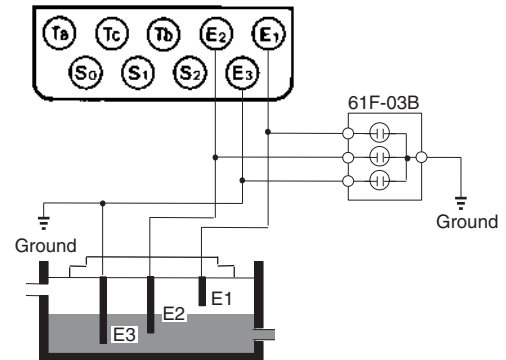


### Precautions

1. Mount the Surge Suppressor Unit as close to the Controller as possible.
2. When grounding the Surge Suppressor Unit in the vicinity of the Controller, connect the ground side of the Surge Suppressor Unit to electrode E3.



3. When connecting the Surge Suppressor Unit, wire as shown in the following example (with three electrodes).



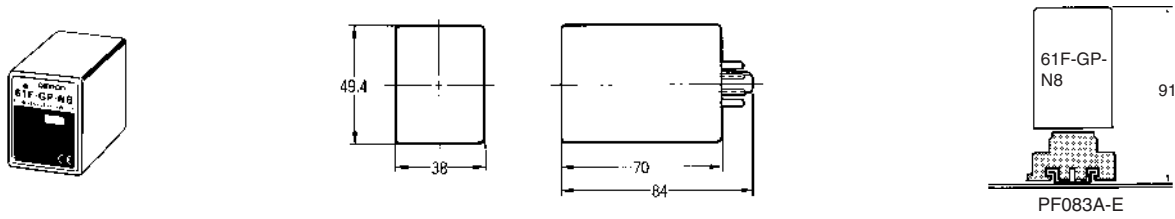
### Connection Sockets

- PF113A-E Track-mounted Socket
- PL11 Back-connecting Socket

Level Controllers

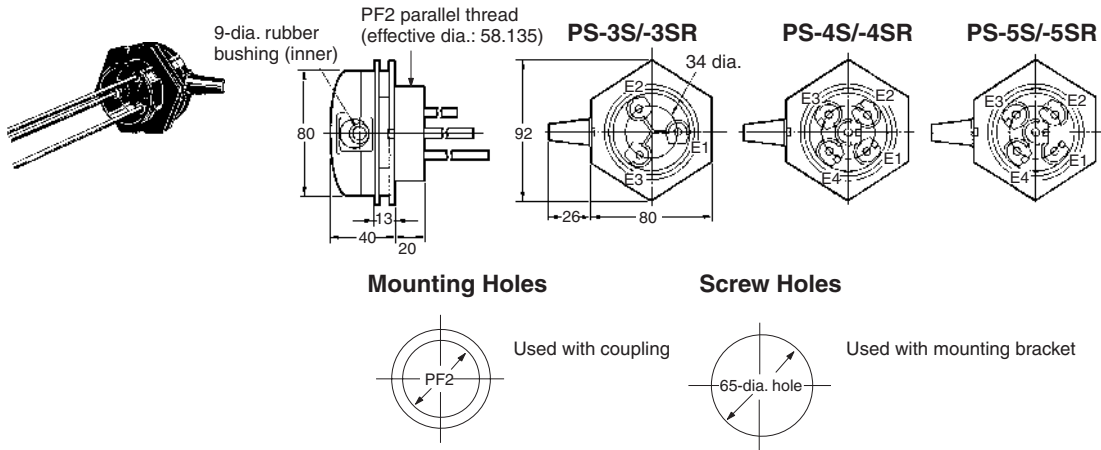
# Dimensions

Note: All units are in millimeters unless otherwise indicated.

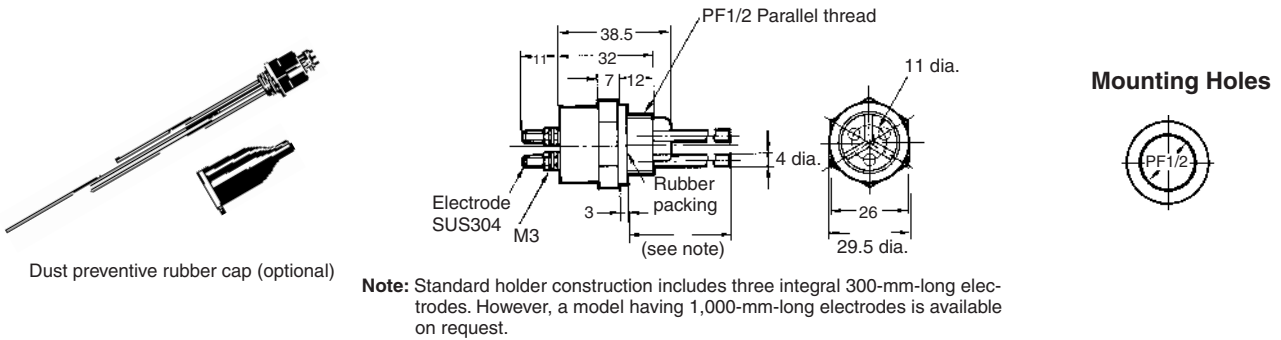


## Electrode Holders

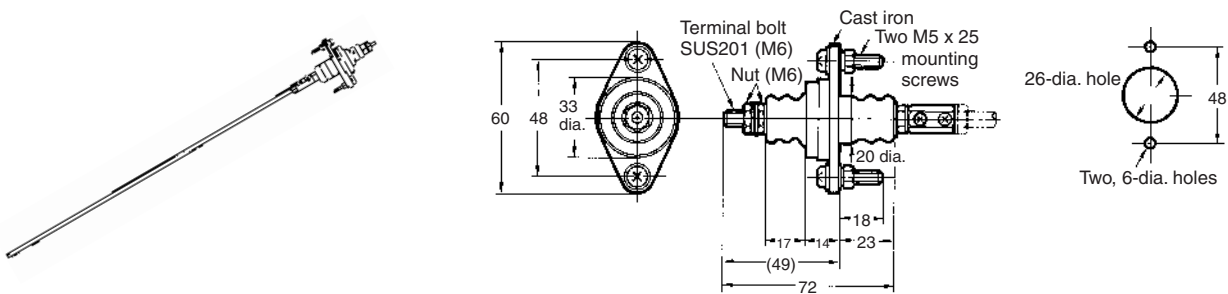
PS-□S



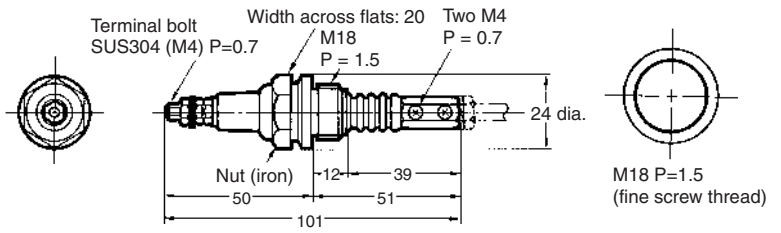
PS-31



BF-1

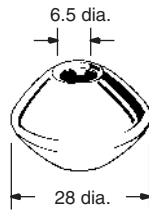


BS-1

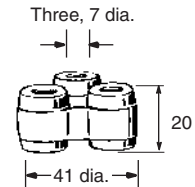


## Electrode Separators

F03-14 1P (for Single Pole)



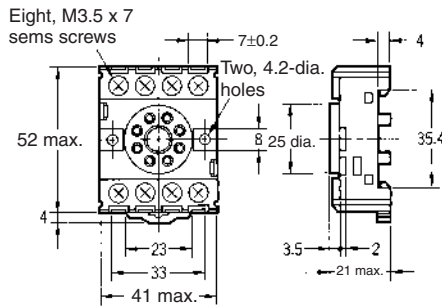
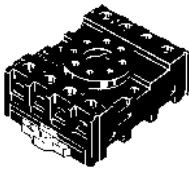
F03-14 3P (for Three Poles)



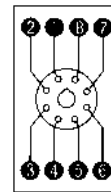
## Connecting Sockets

Track Mounted Socket

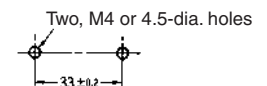
PF083A-E



Terminal Arrangement/  
 Internal Connections  
 (Top View)

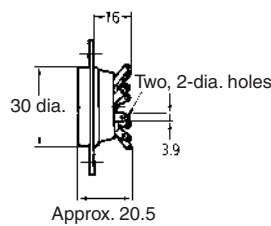
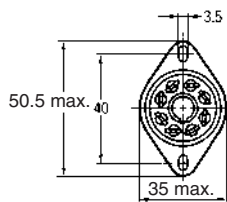


Mounting Holes

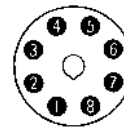


Back Connecting Socket

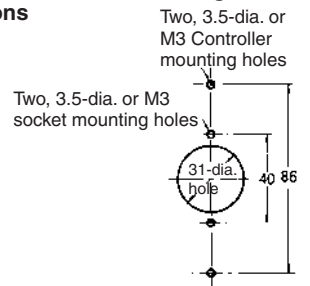
PL08



Terminal arrangement/  
 Internal Connections  
 (Bottom View)



Mounting Holes

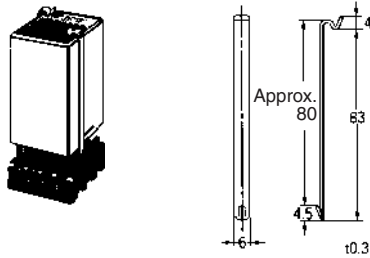




## Holding Brackets

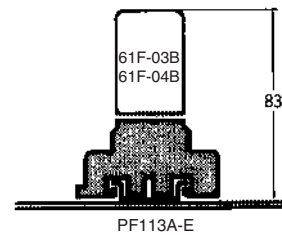
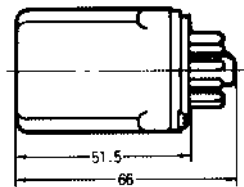
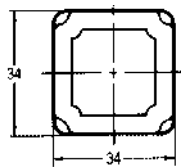
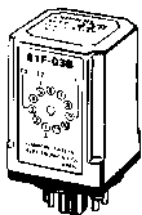
To mount the 61F-GP-N8 Conductive Level Controller on the PF083A Track Mounted Socket, use the PFC-N8 Mounting Brackets attached to the Socket as an accessory.

PFC-N8



## Surge Suppressor Unit

61F-03B  
61F-04B



## Application Examples

- Level control in tanks, reservoirs, sewage plants, underground wells, mixing plants etc.
- Level control for element protection in pipes, channels, and irrigation systems.
- Flow detection in pipes, channels, and irrigation systems.
- Ice bank control in cold drink dispensers, ice makers, water chillers, bulk milk tanks, etc.
- Dispensing of liquids by volume.
- Indication of liquid buildup due to filter blockages.
- Pollution/foul water detection for rivers, drains, etc.
- Alarm control warning of abnormal or dangerously high or low levels.

## Application

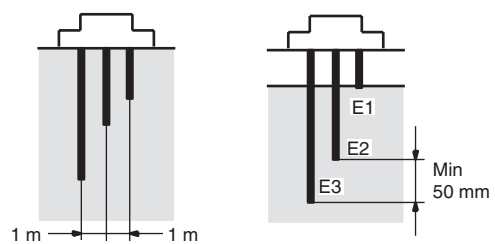
When using electrodes in sea water or sewage, provide a sufficient interval (normally 1 m) between the electrodes. If the sufficient interval cannot be provided, employ a low-sensitivity-type Floatless Level Controller.

When taping one of the electrodes to prevent it from contacting the other electrodes in water, do not tape the electrode entirely but leave at least 100 mm of its end uncovered.

When the required length of the electrode is more than 1 m, use a separator at each joint of two electrodes so as to prevent the electrodes from contacting one another.

**Note:** Avoid use of the separators in dust-containing liquids.

Usually, electrodes are used in a set of three: long, medium, and short. Connect the short electrode to E1, the medium electrode to E2, and the long electrode to E3. Make E3 at least 50 mm longer than E2.



Electrodes are in actual contact with the liquid. Standard electrodes are made of stainless steel and usable in purified water, sea water, sewage, acid (except acetic acid, sulfuric acid, etc.) and alkaline liquids, although they may corrode depending upon the temperature and working conditions.

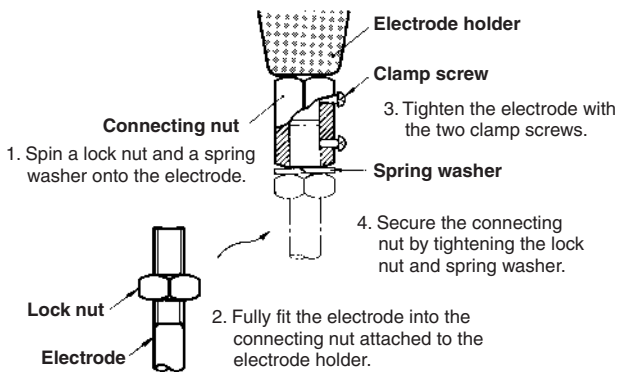
Note that the 61F-GP-N8 Conductive Level Controller is capable of controlling liquids with specific resistances of up to 30 kΩ-cm when the Controller employs a PS-3S electrode holder with the electrode(s) submerged to a depth of 30 mm max.

Kind of water	Specific resistance	Applicable type
City water	5 to 10 kΩ-cm	Standard type
Well water	2 to 5 kΩ-cm	Standard type
Industrial water	5 to 15 kΩ-cm	Standard type
Rainwater	15 to 25 kΩ-cm	Standard type
Sea water	0.03 kΩ-cm	Low-sensitivity type
Sewage	0.5 to 2 kΩ-cm	Low-sensitivity type
Distilled water	100 kΩ-cm or less	High-sensitivity type
	Over 100 kΩ-cm	Consult OMRON

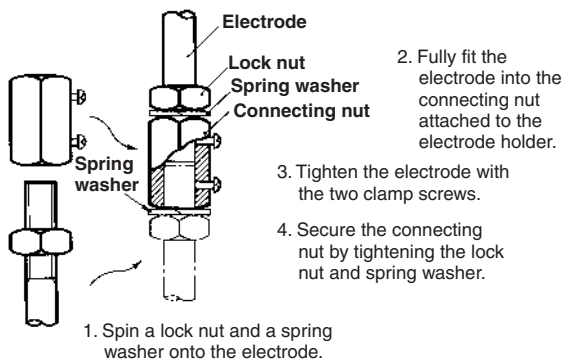
## Precautions

### ■ How to Mount Electrodes

#### Connecting Electrodes to Electrode Holders



#### Connecting One Electrode to Another



ALL DIMENSIONS SHOWN ARE IN MILLIMETERS.

To convert millimeters into inches, multiply by 0.03937. To convert grams into ounces, multiply by 0.03527.

Cat. No. F043-E1-02

In the interest of product improvement, specifications are subject to change without notice.

Omron, Реле, твердотельное, промежуточное, силовое купить в Минске tel. +375447584780  
www.fotorele.net www.tiristor.by радиодетали, электронные компоненты  
email minsk17@tut.by tel.+375 29 758 47 80 МТС

каталог, описание, технические, характеристики, datasheet, параметры, маркировка, габариты, фото

