

SEVCON Минск +375447584780 Viber telegram

www.fotorele.net

каталог, описание, технические, характеристики, datasheet, параметры, маркировка, габариты,
фото, модуль, даташит, модуль, преобразователь,

Каталог контакторов 2025г.

Контакторы в Беларуси

купить, продажа в **Минске, Беларусь**

электронные компоненты

[где и как купить в Минске?](#)

Контроллеры, инверторы, преобразователи

Контроллеры Curtis

Контроллеры Curtis

Контроллеры Zapi

Контроллеры Zapi

Контроллеры Sevcon

Контроллеры Sevcon

Контроллеры Komatsu

Контроллеры Komatsu

Платы управления для погрузчиков

Mobile +375447584780 Viber telegram

DUTCH
ELECTRO**POWER**

HSCT

SEVCON

EXCLUSIVE
DISTRIBUTOR

MAGAZINE



WWW.HSCT.NL

HIGH VOLTAGE LOW POWER (HVLP)

HVLP CONTROLLER

10kW & 20kW continuous!

Operating voltage,
200 to 800 VDC.



HVLP-10



HVLP-20

FEATURES

- Liquid or air cooled variants
- CAN J1939 protocol
- High Voltage Interlocks (HVIL)
- Tough / safe electrical connectors
- Additional I/O
- Based on proven Gen4 technology
- Advanced Flux Vector Control
- PMAC or Induction motors
- Incremental AB encoder input
- Absolute UVW encoder input
- Absolute sin/cos encoder input
- Resolver input
- 12V or 24V logic supply
- IP6K9K - IP67 robust alloy housing

Parameter	HVLP-10	HVLP-120
Cooled variant	Air	Liquid
Continuous output current (A)	19	33
Continuous output power @ 700VDC (kW)	11	22
Maximum output current (A) for 60s	27	53
Stall output current (A) for 5s	27	53

SEVCON GEN4 SIZE8

HV EV CONTROLLER

Operating voltage 128 to 400 VDC

Output current,
200A - 400A.



FEATURES

- CANopen and J1939 protocols
- Additional processor for safety monitoring
- ISO 26262 compliance
- 4 analog inputs + 1 motor Thermistor input
- 3 analogue outputs
- 4 digital inputs
- 3 power supply outputs, programmable 0 to 10V
- Pulsed Input and output health status watchdogs
- Incremental AB encoder input
- Absolute UVW encoder input
- Absolute sin/cos encoder input
- Resolver input
- 12V or 24V logic supply
- Liquid or air cooling
- Weight = 10kg

SEVCON GEN4 SIZE9 (COMING SOON)

HV ON-ROAD MOTOR CONTROLLER

Operating voltage 128 to 430 VDC

Output current

- 600 Arms (10 seconds @ 25oC)
- 400 Arms (2 min)
- 200 Arms (Continuous 1 hour+)



FEATURES

- AC Permanent Magnet synchronous motor
- AC Induction motor (2016)
- Advanced flux vector control
- Includes an additional dedicated safety supervisory processor
- 12V or 24V nominal supply
- Designed for ISO26262 ASIL C compliance
- Integrated logic circuit
- HVIL Safety Circuit
- CAN Communication (J1939 or CANopen)
- Dry Weight = 6.8kg

SEVCON GEN4 SIZE10

HV CONTROLLER

Operating voltage 50 to 800 VDC

Output current

- 400 Arms (2 min)
- 200 Arms (Continuous)



FEATURES

- On-Road capability
- CANopen and J1939 protocols
- Additional processor for safety monitoring
- ISO 26262 compliance
- 4 analog inputs + 1 motor Thermistor input
- 3 analogue outputs
- 4 digital inputs
- 3 power supply outputs, programmable 0 to 10V
- Pulsed Input and output health status watchdogs
- Incremental AB encoder input
- Absolute UVW encoder input
- Absolute sin/cos encoder input
- Resolver input
- 12V or 24V logic supply
- Liquid cooling (min 6l/min)
- Compact & lightweight @ 10.9kg

24 months of stringent validation
testing with JLR
Jaguar – C-X75 Supercar Program



SEVCON GEN4 SIZE 2, 4 & 6

SEVCON AC MOTOR CONTROLLER



FEATURES

- Advance flux vector control
- Autocheck system diagnostic
- Integrated logic circuit
- Hardware & software failsafe watchdog operation
- Supports both PMAC motor and AC induction motor control
- Integrated fuse holder
- IP66 protection

	Voltage	Boost	2 min	Cont
Size 6	24V	780A	650A	260A
	36/48V	780A	650A	220A
	72/80V	660A	550A	220A
	110V		450A	
Size 4	24V	540A	450A	180A
	36/48V	540A	450A	180A
	72/80V	420A	350A	140A
	110V		300A	
Size 2	24V	360A	300A	120A
	36/48V	330A	275A	110A
	72/80V	215A	180A	75A
	110V		150A	

SEVCON GEN4 DC

DC CONTROLLER



The Gen4 DC sets a new standard in DC brushed motor controller performance and reliability.

The Gen4 DC is compatible with a wide range of motors, including Separately Excited Motor (SEM), Permanent Magnet brushed motors and Series wound motors. The Gen4 can be configured to accurately drive the motor in current control mode, offering a real and precise torque control of the motor. Speed control is also available.

All types of motor are driven via four-quadrant armature control, resulting in immediate delivery of motor torque and enhanced fault protection of the system. Integrated logic circuitry and vehicle control functionality means that VCU functionality can be configured within the Gen4 DC unit.

Speed limitation is available by use of complementary switching MOSFET operation and battery current regeneration is possible in most motor configurations.

FEATURES

- Integrated IO and logic circuit
- Four quadrant armature control
- Hill decent speed limitation (with/without speed sensor)
- True torque control
- Hardware and software failsafe watchdog operation
- Integrated Capacitor pre-charge function
- CANBus communication
- Power up autocheck system diagnostics
- Motor speed sensor input available
- IP66 protection
- Integrated power fuse holder

SEVCON POWERPAK

DC MOTOR CONTROLLER



The Powerpak series is a comprehensive range of vehicle controllers, combining ultra compact size with an unrivaled power to dimension ratio. With current ratings of up to 600A these controllers occupy a footprint of only 142x142 mm. This makes it up to 75% smaller than similar function units of other makes.

FEATURES

- Ultra compact size
- Regenerative braking
- Speed compensation for steering
- High frequency - silent operation
- Removable logic unit
- Calibrator interface
- FLASH memory
- Choice of display options
- Sevcon CAN compatible

KEY PARAMETERS

	Battery Voltage (Vdc)	Max Power (kW))	Peak Current 1 Min (A)	Max Field Current (A)
Series Traction	24-48	4.5	300	-
		5.8	450	-
		8.5	650	-
	80	8.5	450	-
		8.5	600	-
SEM Traction	24-48	4.5	350	50
		6.5	500	50
	80	8.5	420	50
Series Pump	24-48	8.5	300	-
		5.5	450	-
		8.5	650	-
	80	8.5	450	-
		8.5	600	-

IP55 Protection Weight 1.8kg

SEVCON MILLIPAK

DC & AC MOTOR CONTROLLER



The Millipak family of DC and AC motor controllers provides an enhanced thermal design for traction and pump systems. Millipak controllers deliver high power capabilities in a minimum of space without compromising performance.

FEATURES

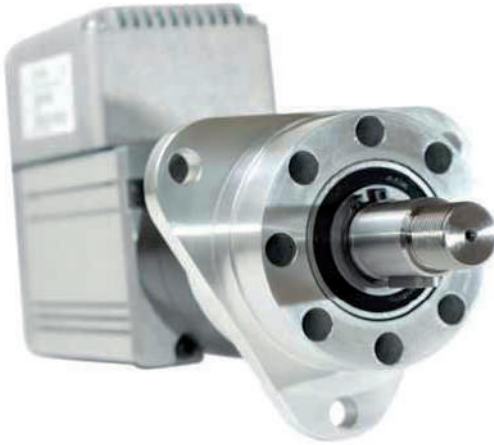
- Very compact design
- Silent operation
- Regenerative braking
- PC Configuration
- Flash memory
- Diagnostic LED
- IP66 protection

KEY PARAMETERS

	Battery Voltage	Max. Power (kW)	Peak Current I _{min} (A)	Field Current (A)
SEM Traction	24	2	300	30
	24	4	500 / 600	40 / 50
	48	4	300	30
	48	6.5	500 / 600	40 / 50
Series Pump	24	2	300	-
	24	4	600	-
	48	4	300	-
	48	6.5	600	-
Brushed PM	48	4	300	-

SEVCON PST

POWER STEERING



The Sevcon PST range of Integrated Brushless Servo Systems offers a compact, robust, maintenance free solution to replace hydraulic motors and actuators in a wide variety of industrial applications. Covering operating voltages from 24 to 48V, the system is easily optimized and can be operated in position, velocity or torque modes to handle the most demanding applications.

FEATURES

- CANopen
- Compact size
- Highest efficiency
- Position, speed, torque control
- High reliability gearbox
- Customization available (gear ratio, coupling, mounting)

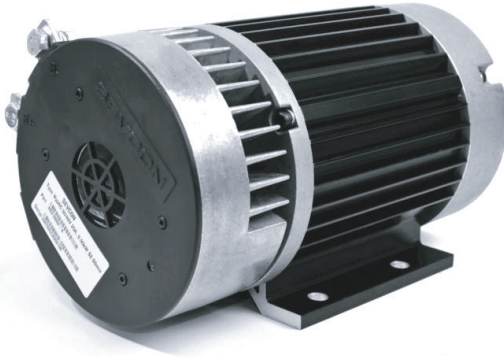
KEY PARAMETERS

- Optimized planetary gears for high speed / high torque
- Increased bearing spacing for enhanced radial force immunity
- Low noise via unique two-stage planetary gear design
- Grease impregnated for long life
- Neodymium magnets for excellent power-to-size ratio
- Integrated position sensors
- Combined motor and gearbox shaft eliminates unreliable coupling
- Integrated Motor-to-Drive connections for increased reliability
- DSP motor controller for fast, accurate step response
- Extensive integrated, configurable safety features comply with worldwide safety standards
- I2t Drive & Motor protection eliminates overload failures
- Housing and connector sealed to IP54



SEVCON HypAC

HYDRAULIC POWER STEERING



Specially designed to offer a brushless alternative to DC series pump systems the HypAC, brushless permanent magnet AC motor and integrated controller, provides significant performance advantages over an equivalent DC system. HypAC simplifies the path to a completely brushless vehicle design.

SIMPLE APPLICATION

Its simple interface mimics typical DC motor/contacter system. An additional fault reporting interface is available to provide operating status to a vehicle controller.

ENHANCED OPERATING MODELS

Open loop mode for full speed at available battery voltage to mimic DC motor operation. Closed loop mode for fixed speed operation to give consistent performance across varying operating voltages. Load compensation mode for optimal energy efficiency and reduced system audible noise. The motor speed is automatically regulated relative to the applied load.



FEATURES

- Highly efficient brushless, maintenance free motor perfectly suited to high duty cycle applications such as hydraulic power steering.
- Soft start significantly reduces inrush currents and acceleration forces, improving battery life and mechanical reliability.
- IP54 protection
- Integrated CoolFlow thermal management ensures that the full operating specification is achieved in a +60°C ambient.
- The system can be supplied fully assembled with hydraulic pump and tank thus saving production line assembly time.
- Hydraulic load sensing for optimal power delivery and reduced audible noise.

CLEARVIEW

DIGITAL DISPLAY



Clearview is a configurable CANopen colour display which can be set up to show a variety of information sent from the Sevcon motor controllers it is connected to. It can also be used to configure parameters on the controllers.



KEY PARAMETERS

Operating voltage:	21V to 28.8V
User interface:	3 button keypad input
Operating temperature:	-20°C to +50°C
Non-operation temperature:	-30°C to +70°C
Humidity:	85% (non-condensing) at 40°C and 3% at 40°C
Weight:	0.3kg
IP rating:	IP54

FEATURES

- 3.5 inch, 320x240, 256 colour display.
- Auto-baud rate detection.
- Configurable main screen.
- Single and multi-node support.
- Displays active faults and warnings.
- Displays a historical fault log for faults on the motor controller system.
- Flash programmable for display software updates.
- Calibrator functionality available to provide vehicle performance adjustments (via password entry)
- Option for OEM logo on powerup splash screen.
- Displays driver input status signals (e.g. throttle, direction, handbrake, etc.)
- Displays system status information (e.g. motor temperature, battery voltage, motor current, etc.)

DISPLAY TOUCH SCREEN

7" TOUCHSCREEN

This 7" touchscreen display can be configured to each desire with a specific program for every system.



FEATURES

- 7" Touchscreen
- IP65
- Temperature - 20 + 50 graden
- Voltage 24 volt DC

COMMUNICATION

- J1939
- CAN-Open
- NMEA-2K
- Auto baudrate detect

Optional module for extern I/O



SEVCON LV DC/DC CONVERTER

LOW VOLTAGE CONVERTER



FEATURES

- 180, 300 W and 500W models
- 24/36, 36/48, 72/80+ VDC with 12 & 24 output voltage
- Fully isolated
- IP67 protection
- Short circuit and overload protected

SEVCON HV DC/DC CONVERTER

HIGH VOLTAGE CONVERTER



FEATURES

- Modular design (can be used in parallel)
- 1.2kW
- Liquid cooled or Air cooled options
- 700V nominal with 12, 24 or 48VDC output
- Fully isolated
- CAN J1939 protocols
- IP67 / IP6k9k
- Samples in 2016

SEVCON

FRANCE

Sevcon SAS

Parc d'Activité du Vert Galant

95041 CERGY-PONTOISE

CEDEX

France

T: +33 (0)1 34 30 35 00

F: +33 (0)1 34 21 77 02

E: fr.info@sevcon.com

GERMANY

Sevcon

Hintere Str.32

73266 Bissingen an der Teck

Germany

T: +49 (0) 17 09 98 02 94

F: +49 (0) 70 23 74 92 666

E: de.info@sevcon.com

UNITED KINGDOM

Sevcon Limited (Head Office)

Kingsway South

Gateshead

NE11 0QA

England

T: +44 (0) 191 497 90 00

F: +44 (0) 191 482 42 23

E: uk.info@sevcon.com

USA

Sevcon USA, Inc.

155 Northboro Road

Southborough

MA 01772

USA

T: 00 (1) 508 281 5500

F: 00 (1) 508 281 5341

E: us.info@sevcon.com

BENELUX

HSCT

Melkrijder 9

3861 SG Nijkerk

The Netherlands

Phone: +31 33 2570811

Fax: +31 33 2570812

Contact: Mr. Henri Snoek

(mobile: +31 651 816189)

E-mail: hsnoek@hsct.nl

Website: www.hsct.nl